




---

# IMPORTANT SAFETY INSTRUCTIONS

When using an electrical appliance, basic precautions should always be followed, including the following:

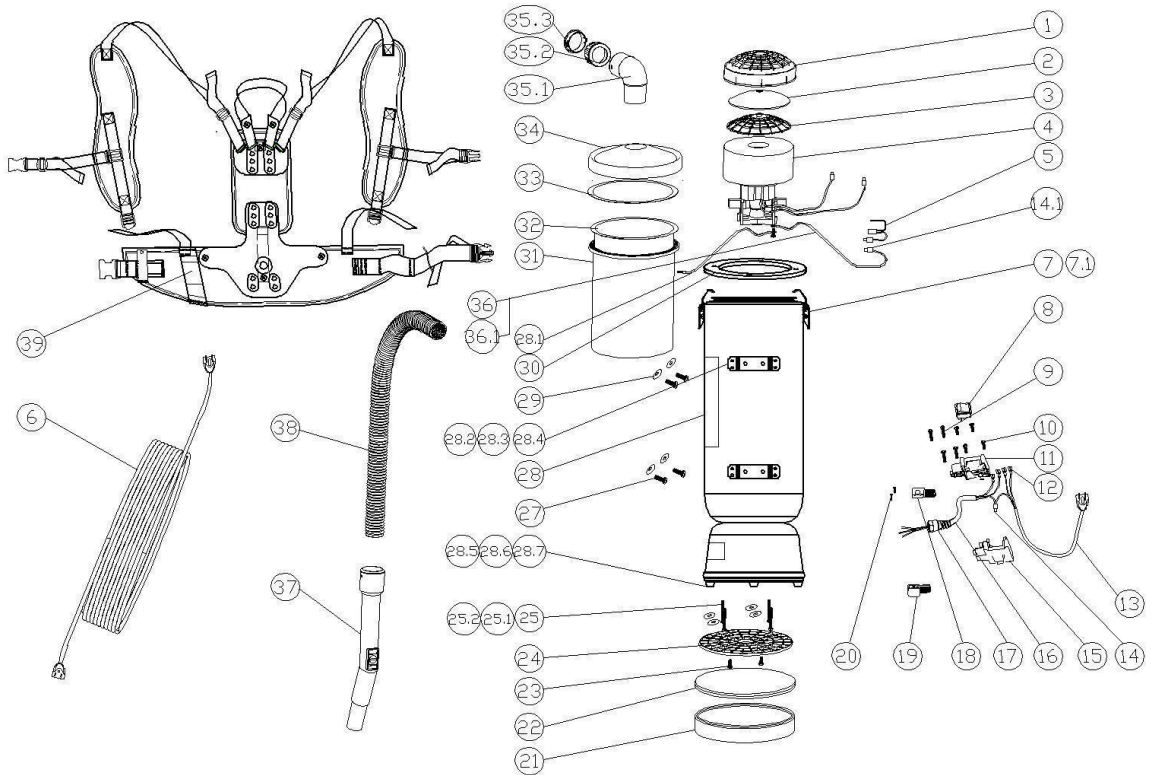
**READ ALL INSTRUCTIONS BEFORE USING.**

 **WARNING** - to reduce the risk of fire, electric shock, or injury:

1. Do not leave the appliance unattended when plugged in. Unplug from outlet when not in use and before servicing.
2. Do not use outdoors or on wet surfaces.
3. Do not try to vacuum liquid with this vacuum. This vacuum is for DRY USE only.
4. Do not allow it to be used as a toy. Close attention is necessary when used by or near children.
5. Use only as described in this manual. Use only manufacturer's recommended attachments.
6. Do not use with if the cord or plug is damaged. If the appliance is not working properly, has been dropped, damaged, left outdoors, or has been dropped into water, return it to a service center.
7. Do not pull or carry by the cord, use the cord as a handle, close a door on the cord, or pull the cord around sharp edges or corners. Do not run appliance over the cord. Keep the cord away from heated surfaces. Connect to a properly grounded outlet only. See grounding instructions.
8. Do not unplug by pulling on the cord. To unplug, grasp the plug, not the cord.
9. Do not handle the plug or appliance with wet hands.
10. Do not put any object into openings. Do not use with any opening blocked. Keep free of dust, lint, hair, or anything that may reduce air flow.
11. Keep hair, loose clothing, fingers, and all body parts away from openings and moving parts.
12. Turn it off before unplugging.
13. Take extra care when cleaning on stairs.
14. Do not use to pick up flammable or combustible liquids, such as gasoline, or use in areas where they may be present.
15. Do not pick up any objects that are burning or smoking, such as cigarettes, matches, or hot ashes.
16. Do not use without a dust bag and /or filters in place.

**SAVE THESE INSTRUCTIONS**

# PROLUX PLC10QT Vacuum Diagram



1. Filter guard A
2. HEPA Filter
3. Filter guard B
4. Motor
5. Thermo-protector
6. Extension Cord (not provided)
7. Cover latch A
- 7a. Screws
8. Switch
9. Screws(M3\*25)
10. Screws(M3\*15)
11. Upper part of switch box
12. Connector terminal and insulator
13. Power supply cords and cord sets
14. Wire connector soldering log
- 14.1. Wire connector soldering log
15. Lower part of switch box
16. Connection cable
17. Connection cable fixer nut
18. Connection cable fixer part 1
19. Connection cable fixer part 2
20. Screws(M3\*12)
21. Round rubber support
22. Sound muffler (Foam filter)
23. Screws(M5\*10)
24. Plastic air diffuser
25. Screw(M5\*15) and washer
27. Screws (5/16\*15)
28. 10Q Canister
- 28.1. Grounding wire
- 28.2. Harness hanger 1
- 28.3. Aluminum rivet 4.2\*12
- 28.4. washer
- 28.5. Φ20 foot gasket
- 28.6. Screw (M5\*10)
- 28.7. Fastening Nut M5
29. Big Washer
30. Motor depression ring
31. 10Q inner dust bag
32. 10Q outer dust bag
33. Cover seal ring
34. Cover
- 35.1. Bent connector tube
- 35.2. Screw for hose
- 35.3. Screw cuff
36. Grounding wire 2
- 36.1. 5 wire connector
37. Handle
38. Hose
39. Harness
40. Rating label
41. Warning Label

---

# INSTALLATION AND OPERATING INSTRUCTION

## INSPECTION

Carefully unpack and inspect your new vacuum for shipping damage. Each unit is tested and thoroughly inspected before shipping.

## WARNING

- DO NOT vacuum with a frayed, worn, or damaged cord.
- DO NOT vacuum liquids or expose the backpack vacuum to rain or water.
- DO NOT vacuum hazardous or toxic materials.
- DO NOT use to pick up flammable or hazardous material

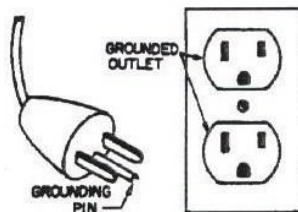
## GROUNDING INSTRUCTIONS

This appliance must be grounded. If it were to malfunction, grounding reduces the risk of electric shock. This appliance is equipped with a cord having an equipment-grounding conductor and grounding plug. The plug must be inserted into an appropriate outlet that is properly installed and grounded in accordance with all local codes and ordinances.

## WARNING-

Improper connection of the equipment-grounding conductor can result in a risk of electric shock. Check with a qualified electrician or service technician if you are in doubt as to whether the outlet is properly grounded. Do not modify the plug provided with the appliance. If it will not fit the outlet, have a proper outlet installed by a qualified electrician.

This appliance is for use on a nominal 120-volt circuit and has a grounding attachment plug that looks like the plug illustrated in sketch A. Make sure that the appliance is connected to an outlet having the same configuration as the plug. No adaptor should be used with this appliance.



(A)

---

## **MOTOR**

The Prolux PLC10QT backpack vacuum uses the industry's best motor, the Amtek motor. Amtek 119534-00 vacuum motors must never be used in an application in which wet or moist conditions are involved, where dry chemicals or other volatile materials are present, or where airflow may be restricted or blocked. Such motors are designed to permit the vacuumed air to pass over the electrical wiring to cool it. Therefore, any liquid, dry chemical, or other foreign substance which could contact the electrical conductors could cause combustion (depending on volatility) or electrical shock. Failure to observe these precautions could result in property damage and severe personal injury, including death in extreme cases.

## **THERMO-PROTECTOR INSTRUCTIONS**

This appliance is equipped with a thermo-protector, which will cut off the circuit automatically to prevent the motor from overheating. Sufficiently plugging the airway for an extended period will result in the vacuum shutting off. If this occurs, press the switch to turn the vacuum to its "OFF" position and wait about 5 minutes for the motor to cool to a safe operating temperature. Be sure to determine the cause of overheating and rectify the problem before using the vacuum cleaner again, or it will continue to overheat and shut off. In some instance the circuit is cut off because of high motor temperature caused by dust bag clog or airway block. Please unplug the vacuum and check the inner paper dust bag and airway. If the dust bag is too dirty and clogged, replace with a new one. If the airway is blocked, please get rid of the blockage before use. The motor can be restarted when it is cool.

## **ELECTRICAL**

The vacuum motor operates on a standard 120 volt, 60Hz, AC circuit. Severe changes in voltage, high or low, can cause damage to the motor and cause premature motor failure.

## **EXTENSION CORD**

To prevent electrical damage, use a 25 ft /16-gauge extension cord (not provided). If you need to use a 100-foot cord, it must be 14-gauge or larger. You may use extension cords up to, but no longer than, 100 fe

---

## PREPARATION FOR OPERATION

1. Remove the cover (No. 34) and cover seal ring (No. 33) and pull out the cloth dust bag (No. 31). Check to see that the filter guards and filter (No. 1, No. 2 and No.3) have not shifted during shipping. (Figure A)
2. Install an inner paper dust bag (No. 32) inside of the outer cloth dust bag (No. 31). At the beginning of each shift, the bags should be checked. Empty or replace as necessary. The unit comes with 5 extra bags and additional bags are readily available for purchase.

NOTE: Never use a paper dust bag without the cloth dust bag.

3. Place the cover seal ring (No. 33) on the dust bag's opening (No. 32). (Figure B)
4. Replace the cover (No. 34) and clip the sunken edge of the cover tight by pushing downward on the cover clip (No.7).
5. Push the bent connector tube (No. 35) into the cover (No.34), make sure that it inserts into the cover (No. 34) completely and tightly (Figure C).



Figure C



Figure D

6. Check the hose ends to make sure that they fit tightly. In the event a hose end comes apart from the hose, the hose can simply be rethreaded into the hose end.
7. Check the wear on the cord by the vacuum body and at the plug. Pass the power supply cord (No.13) through the strip outside the left side of the waist belt (Figure E).


- 
8. Fix the switch box (No.11 and No.15) under the sewn strap and knot the other strap around the switch box. (Figure F & Figure G).
  9. Loosen the waist belt latch and chest belt latch. In an open area, lift the vacuum by one shoulder strap and slide your free arm into the other strap. (Figure D)
  10. Adjust the shoulder straps to allow the waist belt to be buckled around your waist.
  11. Fasten the waist belt and chest belt snugly and make sure the weight is resting comfortably on your hips. NOTE: The back-plate can be adjusted up or down by removing the four screws (No.27) that attach to the vacuum's body. (Figure H)
  12. Attach tools to the handle and make sure the two ends are tightly connected. (Figure I)

## PROPER VACUUMING MOTION FOR LARGE AREA WITH DIRECT

### SUCTION TOOLS

1. Begin with the wand parallel to your body.
2. Draw the top of the wand in towards your waist and twist at the waist walking back and forward (a side-to-side motion).
3. The motion is similar to mopping and keeps the upper body and arms from tiring.

## MAINTENANCE INSTRUCTION

 **WARNING:** The following information is for use by qualified service personnel only and is to provide guidance for troubleshooting and maintenance.

- ◆ UNPLUG the vacuum when working on the motor or any electrical part.
- ◆ CHECK the condition of all electrical cords before each use.
- ◆ DO NOT lubricate the motor; it is equipped with sealed bearings.
- ◆ The appliance has NO user serviceable parts.

### PROPER STORAGE

When the vacuum is not in use, it should be stored in a dry place

### ELECTRICAL CORD CARE

NEVER stretch the cord tightly between the vacuum and the outlet. A cord that is stretched or pulled will not function properly and creates a hazard.

After vacuuming, unplug the cord and wind it up loosely. DO NOT wind the cord up by wrapping it around your hand and elbow.

---

## CARING FOR YOUR VACUUM

1. Every time you finish vacuuming, shake out the cloth and paper dust bags (No.31 and No.32).
2. Each week, rinse, dry and return the foam (NO.21) at the bottom of the appliance below the motor.
3. After each shift, wipe the inside and outside of the vacuum with a household cleaning agent.

## FILTER MAINTENANCE

1. Check the paper dust bag (No.32) each time you start and finish vacuuming. A clogged and dirty dust bag restricts airflow and results in reduced suction and overheating.
2. While vacuuming throughout a building, stop every two hours or as needed to shake out the paper dust bag (No.32). Replace the paper dust bag when necessary. (Figure J)  
**NOTE:** Lift both the paper dust bag and cloth bag out at the same time to avoid ripping the paper dust bag, especially if it is full.
3. Once a month (or as needed) hand or machine wash the cloth dust bag (No.31) and let it LINE DRY. (Do not put it in the dryer).
4. Once a month (or as needed) clean the HEPA filter (No.2) between the motor guards, located inside the vacuum under the paper and cloth dust bag. (Figure K)
  - a. Pull the top piece of the motor guard (No.1) off and remove the HEPA filter (No. 2). Shake it out, rinse it and let it air dry thoroughly. Gently using compressed air can be used for a dry clean.
  - b. Before the next use, return the HEPA filter (No.2) to its place. Replace with new foam media if necessary.
  - c. Firmly snap the top piece of the motor guard (No.1) into place.
5. As needed rinse, air dry, and return the foam filter (No.22) at the bottom of the appliance below the motor
  - a. Pull out the round rubber support (No.21) and take foam filter (No.22) out, rinse it and let it air dry thoroughly.
  - b. Before the next use, return the foam filter (No.22) to its place.
  - c. Put the round rubber support (No.22) into the canister to support the foam filter from falling down.



***The information contained herein is confidential and is intended to be used by Prolux Cleaners authorized distributors and sales representatives.***

---

Prolux Cleaners guarantees its products according to the terms outlined below. There are no other warranties expressed or implied, including any implied warranties of merchantability or fitness for a particular purpose. Under no circumstances will Prolux Cleaners or the seller be liable for any loss, damage, expense, or consequential damage arising in connection with the use or inability to use these products. If a component fails to meet the term of the warranty due to defects in workmanship or materials, Prolux Cleaners will repair or replace the defective component free of charge, including labor according to our flat rate schedule and the Prolux Cleaners Warranty Procedures.

**All warranties implied below are subject to the Exceptions and Exclusions clause in this policy located in this document.**

Product Category	Polyethylene and Structural Foam	Steel Body Parts	Switches, Motors Electrical Parts	Labor Paid
Machine	Years	Years	Years	Years
Battery Walk Behind Scrubbers 14" and 18"	5	2	3yr Switches 3yr or 700hrs (whichever comes first) on the motor 3yr Electrical Parts 12mo Pro Rated Lithium Ion Battery	1
Wide Area Vacuum	5	2	1yr Switches 2yr or 700hrs (whichever comes first) on the motor 1yr Electrical Parts	1
Gel Batteries (3) (4)	N/A	N/A	12mo of Full Coverage	N/A
Micro Scrubber	3	2	12mo Pro Rated Lithium Ion Battery	1
Canister Vacuums	5	N/A	2yr Switches 3yr or 800hrs (whichever comes first) on the motor 3yr Electrical Parts	1
Backpack Vacuums	5	N/A	2yr Switches 3yr or 700hrs (whichever comes first) on the motor 3yr Electrical Parts	2
Upright Vacuums	N/A	N/A	1yr Switches 2yr or 500hrs (whichever comes first) on the motor 1yr Electrical Parts	1
Garage Vacuums	1	10	2yr Switches 2yr or 500hrs (whichever comes first) on the motor 5yr Electrical Parts	2
Wet Dry Vacuums	10	N/A	2yr Switches 2yr or 500hrs (whichever comes first) on the motor 2yr Electrical Parts	2
Carpet Extractors and Fabric Care	10	2	1yr Switches 2yr or 700hrs (whichever comes first) on the motor 2yr Electrical Parts	1

Central Vacuums	N/A	10	2yr Switches 2yr or 800hrs (whichever comes first) on the motor 5yr Electrical Parts	2
Structural Foam Floor Machines	10	2	3yr Switches 3yr or 700hrs (whichever comes first) on the motor 3yr Electrical Parts	2
Commercial Floor Scrubber 13"/15"/17"/20"	5	3	1yr Switches 2yr or 900hrs (whichever comes first) on the motor 1yr Electrical Parts	1
Ozone Generator	N/A	1	1yr Switches 1yr or 300hrs (whichever come first) on the motor 1yr Electrical Parts	1
Steam Extractor	5	N/A	1yr Switches 2yr or 700hrs (whichever comes first) on the motor 2yr Electrical Parts	1

## **Warranty Coverage Information and warranty voids/exclusions**

---

1. Vacuum(s): (Backpack, Cannister, Wide Area and Upright Vacuums) must be used with a Prolux Vacuum bag to qualify for their applicable motor warranty. If the vacuum is used bagless or with another manufacturer's vacuum bag, the warranty is 1 year. Damage or malfunction caused by negligence, abuse, neglect, unauthorized repair, or any other use not in accordance with the user guide is not covered. Damage caused by misuse (e.g., vacuuming up water or other liquids), abuse, negligent handling, failure to perform required maintenance (e.g., not cleaning the equipment, replacing filters) or damage due to mishandling in transit.
2. Subject to the Gel Battery exception and exclusion paragraph located on page 4 of this document.
3. Subject to the Gel Battery Warranty Coverage explained on page 3 of this document.
4. Steam Extractor/Steam Carpet Extractor: This warranty does not apply and is void if the pump, vacuum motor, or heater has worn motor brushes, water damage, freezing, chemical build-up, chemical damage, or evidence of abuse, neglect, or tampering. brushes. Damage or malfunction caused by negligence, abuse, neglect, unauthorized repair, or any other use not in accordance with the user guide is not covered.
5. Walk behind 14" and 18" automatic scrubbers: This warranty does not apply to normal wear, or to items whose life is dependent on their use and care such as belts, cords, switches, hoses, rubber parts, brushes, electrical motor components or adjustments.
6. Ozone Generators: Warranty does not ozone cover plates or filters.

Warranty shall commence six (6) months from the purchase date by the Prolux Cleaners distributor, or on the purchase date by the original end user. Whichever comes first.

### **Labor Rate**

Prolux Cleaners will allow \$50.00 per hour for warranty labor work. All warranty labor charges will be paid on this basis. Any repair that requires less than fifteen minutes of labor will not be eligible for reimbursement. This labor allowance does not take into consideration troubleshooting or diagnosis time taken for the repair. All repair times are subject to the flat rate schedule enclosed in this document.

If any operation is not covered in this flat rate schedule, Prolux Cleaners will determine a labor rate when a claim is made based on actual repair times by our own service technicians.

---

**Please note:** Situations may arise that require special consideration. In these cases, to request special consideration, please contact your Prolux Cleaners warranty department or Prolux Cleaners salesperson and or rep group.

#### Travel Allowance

Travel allowance charges are covered for 180 days from date of purchase to the original end-user for all **battery equipment** Prolux Cleaners will pay \$50.00 per hour to a maximum of 2 hours. Travel allowance for other products is not covered under the warranty policy. It is the purchasers' responsibility to bring equipment to the dealer for warranty repair.

Repair of any components or machines by independent service stations is not allowed except by prior authorization. If unauthorized service is performed by a third party, any debts incurred are the responsibility of the distributor.

#### Replacement Parts

Replacement parts for machines exceeding the original warranty period are covered for ninety (90) days. Replacement parts that are considered wear items carry no warranty.

#### Clearance and Demo Products

Clearance and demo products are covered for the remainder of the original warranty period or six (6) months from the date of sale to the original end user, whichever is greater. This excludes gel batteries.

#### Warranty Parts Shipping Policy

All parts ordered for warranty replacement will be shipped standard ground service. Any requests for expedited delivery will be at the expense of the distributor.

Batteries used in Prolux Cleaners equipment are warranted by their original equipment manufacturers. All warranty claims on batteries will be referred to their original OEM by Prolux Cleaners for inspection. Under no circumstances will Prolux Cleaners or the seller be liable for any loss, damage, expense or consequential damage arising in connection with the use or inability to use these products.

If you have a defective gel battery within its respective warranty period, please follow the instructions below:

- 
1. Contact the Prolux Cleaners warranty department with the machine information (Serial number, Date of Purchase etc.)
  2. If the battery is deemed to be within the warranty period, Prolux Cleaners will arrange a date to inspect and replace (upon inspection approval) the battery with the OEM.
  3. The OEM will pick-up and test/inspect the battery to determine the defect.
  4. If the battery is deemed to be defective by manufacturers defect, the OEM will replace the battery with a new battery.  
If the defect was caused by the user (i.e. undercharging, left in a discharged state etc.), the battery manufacturer will deliver the defective battery back to you with a report explaining why the warranty coverage was denied.

Prolux Cleaners is not responsible for labor, freight, travel, or installation charges associated with battery diagnosis or replacement when the warranty coverage is denied by the OEM.

All warranties implied above are subject to the Exceptions and Exclusions clause in this policy.

#### **Gel Batteries:**

Our warranty does not cover batteries that have suffered damage due to over or under charging or batteries that have suffered sulphation due to being left in an uncharged state for any period of time. Warranty will not be allowed under any circumstances if there has been any tampering with the vent covers. Transit or storage damage is also not covered.

Warranty coverage does not apply to parts which fail due to the following conditions:

- Improper or low voltage
- Improper extension cord selection
- Dirty or inefficient water supply
- Inappropriate chemical use
- Improper or insufficient service or maintenance
- Used with clogged or damaged filters.
- Used without a filter.
- Use of a machine in excess of design duration or any conditions damaging to the normal operation of the equipment.
- Disassembly of any components, such as motors, may result in the refusal of warranty coverage.

1. Any parts replaced under warranty are only covered for the remainder of the original warranty period.

---

2. Warranty service can only be performed by authorized distributors or approved warranty repair centers.
3. Compensation for repairs is determined by the flat rate schedule enclosed in this document.
4. Components that have become defective through wear or abuse are not covered by this warranty.

#### Wear Items

Numerous items wear out under normal usage conditions. These items are not eligible for warranty coverage. These include vacuum hoses, hose cuffs, hose fittings, brushes, belts, filters, filter screens, grips, skirts, pad drivers or brushes, Clutches, Castors, Pulleys, Wheels, Tires, Light Bulbs, Gaskets, battery cables and connectors, carbon brushes, filters, fuses, drain hoses, power cords, squeegee blades, bearings, O-rings, armatures, floor tools, and vacuum bags.

This is only a partial listing of wearable items. Please contact the Prolux Cleaners warranty department for clarification of wearable items not listed in this document.

#### Freight Damage:

Freight damage is not covered under the Prolux Cleaners warranty policy.

#### Replacement Parts:

Prolux Cleaners will not honor any warranty claims for parts, labor, or travel if the replacement part was not purchased through Prolux Cleaners.

**Prolux cleaners reserves the right to review or modify the above document at any time without specific written or prior notice. This warranty policy precedes all other warranty policies previously published.**

