



Congratulations on the purchase of your new Prolux PLC13 Heavy Duty Single-Pad Floor Buffer/Scrubber! Weighing in at only 28lbs, with its wide array of cleaning/scrubbing pads (sold separately), powerful high speed/high torque motor, The Prolux PLC13 has all the pads you need for any floor surface around the home. Comes standard with a 3-year limited body warranty and an extended, 2-year/900 hour limited motor warranty, due to its maintenance-free brushless motor. The PLC13 was designed to be one of your most used appliances, with washable cleaning pads, easily attachable cleaning accessories, and simple to use design.



# Table of contents

<b>Specifications .....</b>	<b>3</b>
<b>Safety Precautions .....</b>	<b>4-6</b>
<b>Assembly</b>	
Getting To Know Your cleaner .....	7
Assembling your cleaner.....	8
<b>Operation</b>	
Using your Prolux PLC13 Buffer.....	9
Using the Cleaning Pads .....	10
<b>Maintenance</b>	
How to clean the scrubbing pads.....	10
Cleaning the Housing.....	10
<b>Troubleshooting .....</b>	<b>11</b>
<b>Warranty .....</b>	<b>12</b>

## Specifications

- Made from Heavy Duty Material
- 13" Buffer
- Wattage - 250
- Voltage - 115
- Easy to clean pads
- Speed - 150 rpm
- Hertz - 60
- Cleaning Path - 13"
- Power Cord - 18 AWGX3CSJT
- Industrial Grade Telescopic Wand
- Single Button Operation

## IMPORTANT SAFETY INSTRUCTIONS

When using an electrical appliance, basic precaution should always be followed, including the following:

### **READ ALL INSTRUCTIONS IN THIS OPERATING MANUAL BEFORE USING THIS APPLIANCE.**

Keep the operating manual for reference. Include the operating manual if you pass the appliance to third parties. **Violations of the operating instructions can lead to severe injuries as well as damage to the appliance.** Prolux takes no responsibility for damages due to violations of these operating instructions.

#### **The Notices Given**

Notices for your safety are especially marked. Always observe these notices to avoid any damage to the appliance.

**WARNING:** Warning concerning health hazards describing possible risks of injury.

**ATTENTION:** Warning concerning possible dangers to the appliance or other objects.

**NOTE:** Highlights tips for you.

**WARNING-**To reduce the risk of fire, electric shock, or injury:

1. Do not leave the cleaner when plugged in. Unplug from outlet when not in use, and before servicing.
2. Use only as described in this manual. Use only the recommended attachments and replacement parts.
3. To reduce the risk of electric shock, do not use outdoors, or on over saturated surfaces.
4. Use only as described in this manual. Use only the manufacturers recommended attachments.
5. Do not use with damaged cord or plug. If the cleaner is not working as it should, has been dropped, damaged, left outdoors, or dropped into water, take it to a service center before use.
6. Do not pull or carry the cleaner by its power cord, do not use the power cord as a handle, do not close the door on power cord, or pull the power cord around sharp edges or corners. Do not run the cleaner over the power cord. Keep the power cord away from heated surfaces.
7. Do not unplug the power cord from your wall by pulling on the cord. To unplug, grasp the end of the plug, not the cord.
8. Do not handle the power cord, or cleaner with wet hands.
9. Do not put any object into the openings or moving parts of the cleaner. Do not use the cleaner with any openings blocked. Keep openings and moving parts free of dust, lint, hair and anything that may cause the unit to not work properly.
10. Keep hair, loose clothing, fingers, and all parts of body away from openings and moving parts of the cleaner.
11. Turn all controls off before unplugging the cleaner.
12. Take extra care when cleaning on stairs.
13. Do not use to pick up flammable or combustible liquids, such as gasoline, or use in areas where they may be present.
14. Do not allow end of plug to whip when winding up the power cord.
15. Unplug the cleaner or cleaner attachments.
16. Do not clean over anything that is burning or smoking, such as cigarettes, matches, or hot ashes.

17. Do not use without pads.

18. Test a small floor area with the pads/solution you intend to use before use to make sure it will not cause any harm to the floor.

19. If the supply cord is damaged, the manufacturer or an authorized service center must replace it, in order to avoid a hazard.

20. This appliance is not intended for use by persons (including children) with reduced physical, sensory or Mental capabilities, or lack of experience and knowledge, unless they have been given supervision or instructions concerning the use of the appliance by a person responsible for their safety.

Children should be supervised to ensure they do not play with the appliance.

Do not clean:

- Hair and other parts of the body. This could cause injury.
- Toner dust (from laser printers, copying machines, etc.). There is danger of fire or explosion.
- Hot ash, burning cigarettes or matches. This could cause a fire.
- Pointed objects such as glass shards, nails, etc. Such objects destroy the cleaning pads.
- Plaster, cement, and fine drilling-dust, makeup, etc. This will cause the cleaning pads to clog, causing damage to the appliance.

Never use the appliance near flammable or explosive materials -- there is danger of fire or explosion.

Never use the appliance outdoors -- there is danger of rain and dirt destroying the appliance.

Never stick objects into the appliance's openings or moving parts -- it could cause the appliance to overheat.

### **Cord Connection**

The cleaner and battery charger run on electricity, that means there is always danger of electric shock, so please observe the following.

- Never touch the plug with wet hands.
- Always pull directly with the plug. If you want to disconnect the appliance from the outlet. Never pull on the cord, as it might break.
- Take care that the power cord is not bent, pinched, rolled over or gets in contact with heat sources.
- Use only extension cords suited to the power requirements of the appliance.
- Never immerse the appliance in water or other liquids.
- Only operate the appliance if your outlet voltage is the same as that indicated on the appliance's nameplate. Using the wrong voltage can destroy the appliance.
- If the power cord of this appliance is damaged it must be replaced by the manufacturers, their authorized service representative or a similarly qualified person to avoid danger to the user.

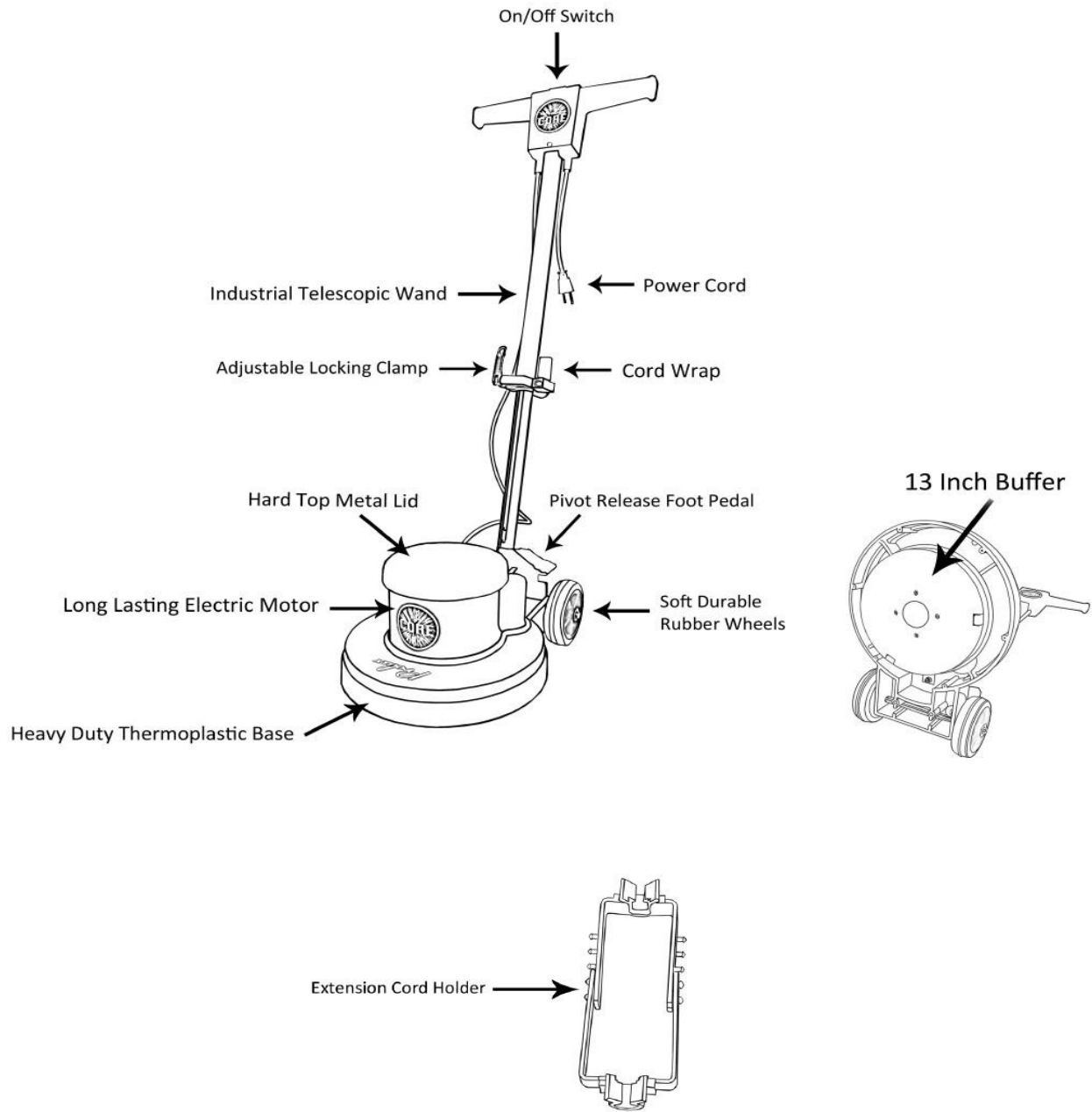
Never use a defective appliance or operate an appliance with a defective power cord. There is a major risk of injury.

### **Children**

Never leave the appliance unattended and use it with special precaution if children or persons who cannot judge dangers are nearby.

People (including children) who are unable to safely operate the appliance on account of their physical, sensory or mental abilities or their lack of experience or knowledge should only use this appliance under supervision or instruction of a responsible person. Packing-materials are not toys. There is a danger of suffocation, KEEP OUT OF REACH OF CHILDREN.

# GETTING TO KNOW YOUR CLEANER

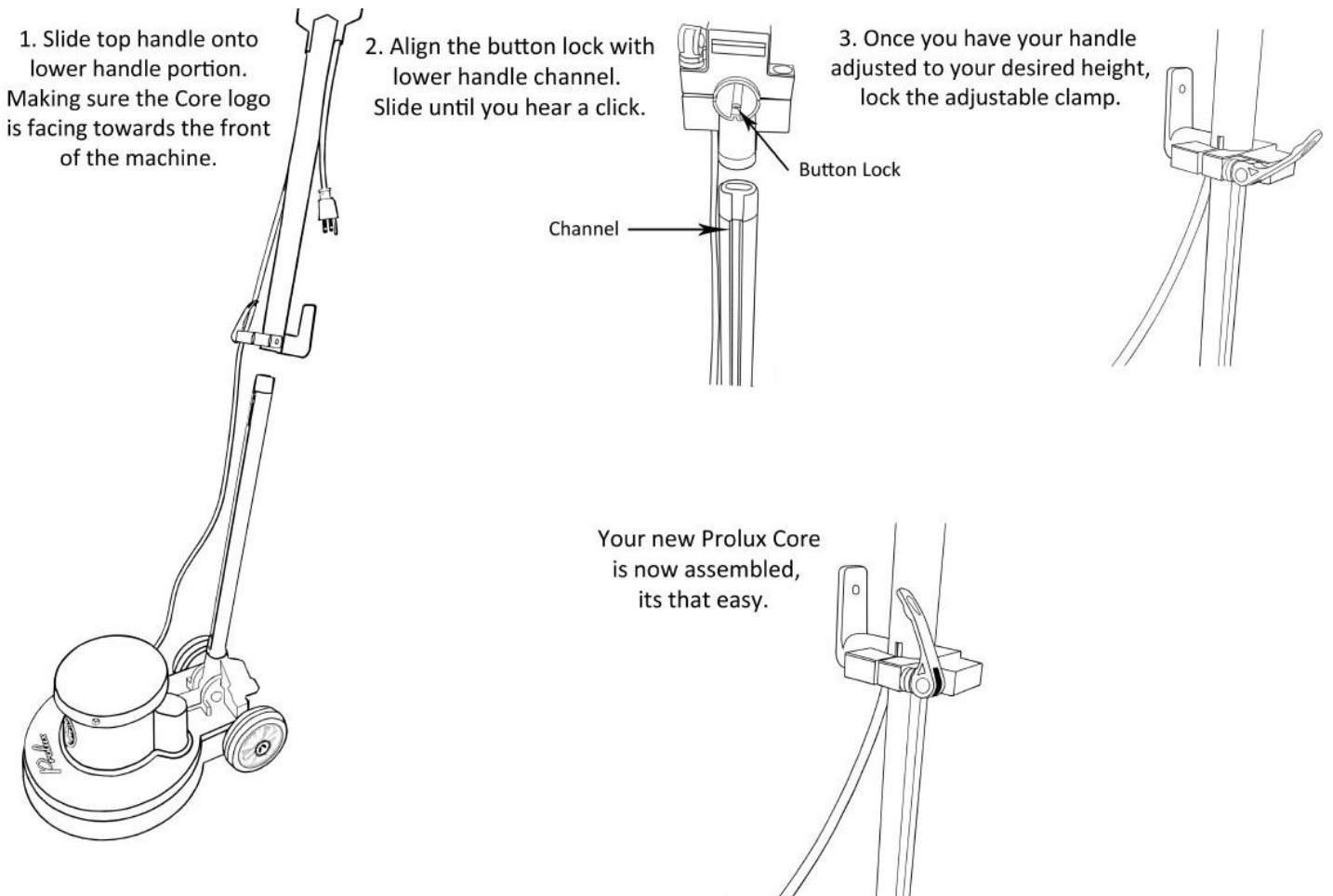


## ASSEMBLING YOUR CLEANER

**NOTE:** Always remove the power plug from the wall outlet before assembling or removing accessories

Assembling your new Prolux PLC13 only requires 3 **EASY** steps.

Please refer to the diagram below for instructions.





# OPERATION INSTRUCTIONS

## **WARNING**

To reduce the risk of electric shock, the power cord must be unplugged before removing the cleaning pads or performing maintenance or trouble shooting.

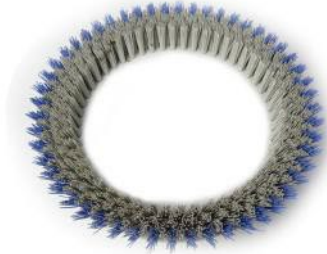
## **USING YOUR PROLUX PLC13 FLOOR BUFFER**

Once you have the unit assembled, and the correct pads installed you are now ready to use your Prolux PLC13.

1. Clear the floor of furniture and other objects.
2. Examine your scrub brush or polishing pad that you are going to use for cleanliness. (Clean or remove debris if needed.)
3. Move to the back corner of the room away from the entrance to begin the cleaning process.
4. Apply buffing solution or polishing cream on the pad or directly on the floor.
5. Adjust the telescopic handle until it's at a comfortable working height.
6. Using either foot, push down on the pivot release pedal. This will make the handle fall towards you.
7. Once plugged in a red light will illuminate on the on/off switch. When ready, grasp the handles firmly and turn the buffer on with the conveniently placed on/off switch.
8. Unlike traditional floor buffers you don't need to push down or lift on the handle to move it. The Prolux PLC13 is easily maneuverable by simply moving it side to side.



**Mopping Pad**  
(MicroFiber - Light Duty)  
(Blue)



**Tile/HardFloor Scrubber**  
(Nylon Brush - Heavy Duty)  
(Blue)



**Pad Holder**  
(Black)



**Scrubbing Pad**  
(Coarse - Medium Duty)  
(White)

*(Pads shown above are not included, but can be purchased separately)*

### ■ USING THE CLEANING PADS

To attach the pads/cloths, take the pad holder and set it on the ground. Make sure the white side is upwards, then simply take your Prolux PLC13 and set it on top of the pad holder. Firmly push down using the Prolux PLC13's weight, you will feel and hear it snap in. Now with the pad holder properly attached all you have to do is set the desired pad/cloth you want to use on the ground and set the Buffer on top of it. To remove the cleaning pads/cloths from the buffer unit, simply detach the pad away from the pad holder **NOTE:** To attach the Tile/Hard Floor scrubber please remove the pad holder. Installation for this pad follows the same step as the pad holder.

### ■ HOW TO CLEAN SCRUBBING PADS

There are multiple sets of cleaning pads that can be purchased separately for your buffer, when they become dirty, you can simply take them off the buffer, and wash them by hand in your sink with warm water and for those lightly soiled pads use a mild detergent. You can also use your washing machine, select a light duty cycle, add mild detergent for those heavily soiled pads, and allow them to air dry.

**NOTE:** DO NOT PLACE IN THE DRYER.

### ■ CLEANING THE HOUSING

**WARNING:** Always switch off the appliance and disconnect it from the outlet before cleaning it.

**ATTENTION:** Do not use Alcohol, cleaning or scouring agents to clean your machine, as these may damage the appliance. Clean the outside of the housing using only a slightly damp washcloth.

## Troubleshooting

**WARNING:** Never use a defective appliance. Always switch off the appliance and disconnect it from the outlet before you start to troubleshoot.

Fault	Possible Cause(s)	Solution
The unit will not turn on.	<ol style="list-style-type: none"> <li>1. Not Firmly plugged into plug.</li> <li>2. No voltage in plug</li> <li>3. Malfunction for start capacitor</li> </ol>	<ol style="list-style-type: none"> <li>1. Plug unit firmly into extension cord plug</li> <li>2. Check fuse or breaker</li> <li>3. Replace it</li> </ol>
Severe Bouncing of Machine	<ol style="list-style-type: none"> <li>1. Using brush on dry surface without dry shampoo or wet shampoo</li> <li>2. Brush or pad holder not properly in place</li> </ol>	<ol style="list-style-type: none"> <li>1. Apply necessary shampoo</li> <li>2. Properly place</li> </ol>
Hearing irregular noises	<ol style="list-style-type: none"> <li>1. Pin is loose</li> <li>2. Chassis screw is loose</li> </ol>	<ol style="list-style-type: none"> <li>1. Check and tighten if needed</li> <li>2. Check and tighten if needed</li> </ol>

***The information contained herein is confidential and is intended to be used by Prolux Cleaners authorized distributors and sales representatives.***

Prolux Cleaners guarantees its products according to the terms outlined below. There are no other warranties expressed or implied, including any implied warranties of merchantability or fitness for a particular purpose. Under no circumstances will Prolux Cleaners or the seller be liable for any loss, damage, expense, or consequential damage arising in connection with the use or inability to use these products. If a component fails to meet the term of the warranty due to defects in workmanship or materials, Prolux Cleaners will repair or replace the defective component free of charge, including labor according to our flat rate schedule and the Prolux Cleaners Warranty Procedures.

**All warranties implied below are subject to the Exceptions and Exclusions clause in this policy located in this document.**

Product Category	Polyethylene and Structural Foam	Steel Body Parts	Switches, Motors Electrical Parts	Labor Paid
Machine	Years	Years	Years	Years
Battery Walk Behind Scrubbers 14" and 18"	5	2	3yr Switches 3yr or 700hrs (whichever comes first) on the motor 3yr Electrical Parts 12mo Pro Rated Lithium Ion Battery	1
Wide Area Vacuum	5	2	1yr Switches 2yr or 700hrs (whichever comes first) on the motor 1yr Electrical Parts	1
Gel Batteries (3) (4)	N/A	N/A	12mo of Full Coverage	N/A
Micro Scrubber	3	2	12mo Pro Rated Lithium Ion Battery	1
Canister Vacuums	5	N/A	2yr Switches 3yr or 800hrs (whichever comes first) on the motor 3yr Electrical Parts	1
Backpack Vacuums	5	N/A	2yr Switches 3yr or 700hrs (whichever comes first) on the motor 3yr Electrical Parts	2
Upright Vacuums	N/A	N/A	1yr Switches 2yr or 500hrs (whichever comes first) on the motor 1yr Electrical Parts	1
Garage Vacuums	1	10	2yr Switches 2yr or 500hrs (whichever comes first) on the motor 5yr Electrical Parts	2
			2yr Switches	

Wet Dry Vacuums	10	N/A	2yr or 500hrs (whichever comes first) on the motor 2yr Electrical Parts	2
Carpet Extractors and Fabric Care	10	2	1yr Switches 2yr or 700hrs (whichever comes first) on the motor 2yr Electrical Parts	1
Central Vacuums	N/A	10	2yr Switches 2yr or 800hrs (whichever comes first) on the motor 5yr Electrical Parts	2
Structural Foam Floor Machines	10	2	3yr Switches 3yr or 700hrs (whichever comes first) on the motor 3yr Electrical Parts	2
Commercial Floor Scrubber 13"/15"/17"/20"	5	3	1yr Switches 2yr or 900hrs (whichever comes first) on the motor 1yr Electrical Parts	1
Ozone Generator	N/A	1	1yr Switches 1yr or 300hrs (whichever come first) on the motor 1yr Electrical Parts	1
Steam Extractor	5	N/A	1yr Switches 2yr or 700hrs (whichever comes first) on the motor 2yr Electrical Parts	1

### **Warranty Coverage Information and warranty voids/exclusions**

1. Vacuum(s): (Backpack, Cannister, Wide Area and Upright Vacuums) must be used with a Prolux Vacuum bag to qualify for their applicable motor warranty. If the vacuum is used bagless or with another manufacturer's vacuum bag, the warranty is 1 year. Damage or malfunction caused by negligence, abuse, neglect, unauthorized repair, or any other use not in accordance with the user guide is not covered. Damage caused by misuse (e.g., vacuuming up water or other liquids), abuse, negligent handling, failure to perform required maintenance (e.g., not cleaning the equipment, replacing filters) or damage due to mishandling in transit.
2. Subject to the Gel Battery exception and exclusion paragraph located on page 4 of this document.
3. Subject to the Gel Battery Warranty Coverage explained on page 3 of this document.
4. Steam Extractor/Steam Carpet Extractor: This warranty does not apply and is void if the pump, vacuum motor, or heater has worn motor brushes, water damage, freezing, chemical build-up, chemical damage, or evidence of abuse, neglect, or tampering. brushes. Damage or malfunction caused by negligence, abuse, neglect, unauthorized repair, or any other use not in accordance with the user guide is not covered.
5. Walk behind 14" and 18" automatic scrubbers: This warranty does not apply to normal wear, or to items whose life is dependent on their use and care such as belts, cords, switches, hoses, rubber parts, brushes, electrical motor components or adjustments.
6. Ozone Generators: Warranty does not ozone cover plates or filters.

Warranty shall commence six (6) months from the purchase date by the Prolux Cleaners distributor, or on the purchase date by the original end user. Whichever comes first.

#### Labor Rate

Prolux Cleaners will allow \$50.00 per hour for warranty labor work. All warranty labor charges will be paid on this basis. Any repair that requires less than fifteen minutes of

labor will not be eligible for reimbursement. This labor allowance does not take into consideration troubleshooting or diagnosis time taken for the repair. All repair times are subject to the flat rate schedule enclosed in this document.

If any operation is not covered in this flat rate schedule, Prolux Cleaners will determine a labor rate when a claim is made based on actual repair times by our own service technicians.

**Please note:** Situations may arise that require special consideration. In these cases, to request special consideration, please contact your Prolux Cleaners warranty department or Prolux Cleaners salesperson and or rep group.

#### Travel Allowance

Travel allowance charges are covered for 180 days from date of purchase to the original end-user for all **battery equipment** Prolux Cleaners will pay \$50.00 per hour to a maximum of 2 hours. Travel allowance for other products is not covered under the warranty policy. It is the purchasers' responsibility to bring equipment to the dealer for warranty repair.

Repair of any components or machines by independent service stations is not allowed except by prior authorization. If unauthorized service is performed by a third party, any debts incurred are the responsibility of the distributor.

#### Replacement Parts

Replacement parts for machines exceeding the original warranty period are covered for ninety (90) days. Replacement parts that are considered wear items carry no warranty.

#### Clearance and Demo Products

Clearance and demo products are covered for the remainder of the original warranty period or six (6) months from the date of sale to the original end user, whichever is greater. This excludes gel batteries.

#### Warranty Parts Shipping Policy

All parts ordered for warranty replacement will be shipped standard ground service. Any requests for expedited delivery will be at the expense of the distributor.

Batteries used in Prolux Cleaners equipment are warranted by their original equipment manufacturers. All warranty claims on batteries will be referred to their original OEM by Prolux Cleaners for inspection. Under no circumstances will Prolux



Cleaners or the seller be liable for any loss, damage, expense or consequential damage arising in connection with the use or inability to use these products.

If you have a defective gel battery within its respective warranty period, please follow the instructions below:

1. Contact the Prolux Cleaners warranty department with the machine information (Serial number, Date of Purchase etc.)
2. If the battery is deemed to be within the warranty period, Prolux Cleaners will arrange a date to inspect and replace (upon inspection approval) the battery with the OEM.
3. The OEM will pick-up and test/inspect the battery to determine the defect.
4. If the battery is deemed to be defective by manufacturers defect, the OEM will replace the battery with a new battery.  
If the defect was caused by the user (i.e. undercharging, left in a discharged state etc.), the battery manufacturer will deliver the defective battery back to you with a report explaining why the warranty coverage was denied.

Prolux Cleaners is not responsible for labor, freight, travel, or installation charges associated with battery diagnosis or replacement when the warranty coverage is denied by the OEM.

All warranties implied above are subject to the Exceptions and Exclusions clause in this policy.

### **Gel Batteries:**

Our warranty does not cover batteries that have suffered damage due to over or under charging or batteries that have suffered sulphation due to being left in an uncharged state for any period of time. Warranty will not be allowed under any circumstances if there has been any tampering with the vent covers. Transit or storage damage is also not covered.

Warranty coverage does not apply to parts which fail due to the following conditions:

- Improper or low voltage
- Improper extension cord selection
- Dirty or inefficient water supply
- Inappropriate chemical use
- Improper or insufficient service or maintenance
- Used with clogged or damaged filters.

- Used without a filter.
  - Use of a machine in excess of design duration or any conditions damaging to the normal operation of the equipment.
  - Disassembly of any components, such as motors, may result in the refusal of warranty coverage.
1. Any parts replaced under warranty are only covered for the remainder of the original warranty period.
  2. Warranty service can only be performed by authorized distributors or approved warranty repair centers.
  3. Compensation for repairs is determined by the flat rate schedule enclosed in this document.
  4. Components that have become defective through wear or abuse are not covered by this warranty.

#### Wear Items

Numerous items wear out under normal usage conditions. These items are not eligible for warranty coverage. These include vacuum hoses, hose cuffs, hose fittings, brushes, belts, filters, filter screens, grips, skirts, pad drivers or brushes, Clutches, Castors, Pulleys, Wheels, Tires, Light Bulbs, Gaskets, battery cables and connectors, carbon brushes, filters, fuses, drain hoses, power cords, squeegee blades, bearings, O-rings, armatures, floor tools, and vacuum bags.

This is only a partial listing of wearable items. Please contact the Prolux Cleaners warranty department for clarification of wearable items not listed in this document.

#### Freight Damage:

Freight damage is not covered under the Prolux Cleaners warranty policy.

#### Replacement Parts:

Prolux Cleaners will not honor any warranty claims for parts, labor, or travel if the replacement part was not purchased through Prolux Cleaners.

**Prolux cleaners reserves the right to review or modify the above document at any time without specific written or prior notice. This warranty policy precedes all other warranty policies previously published.**

