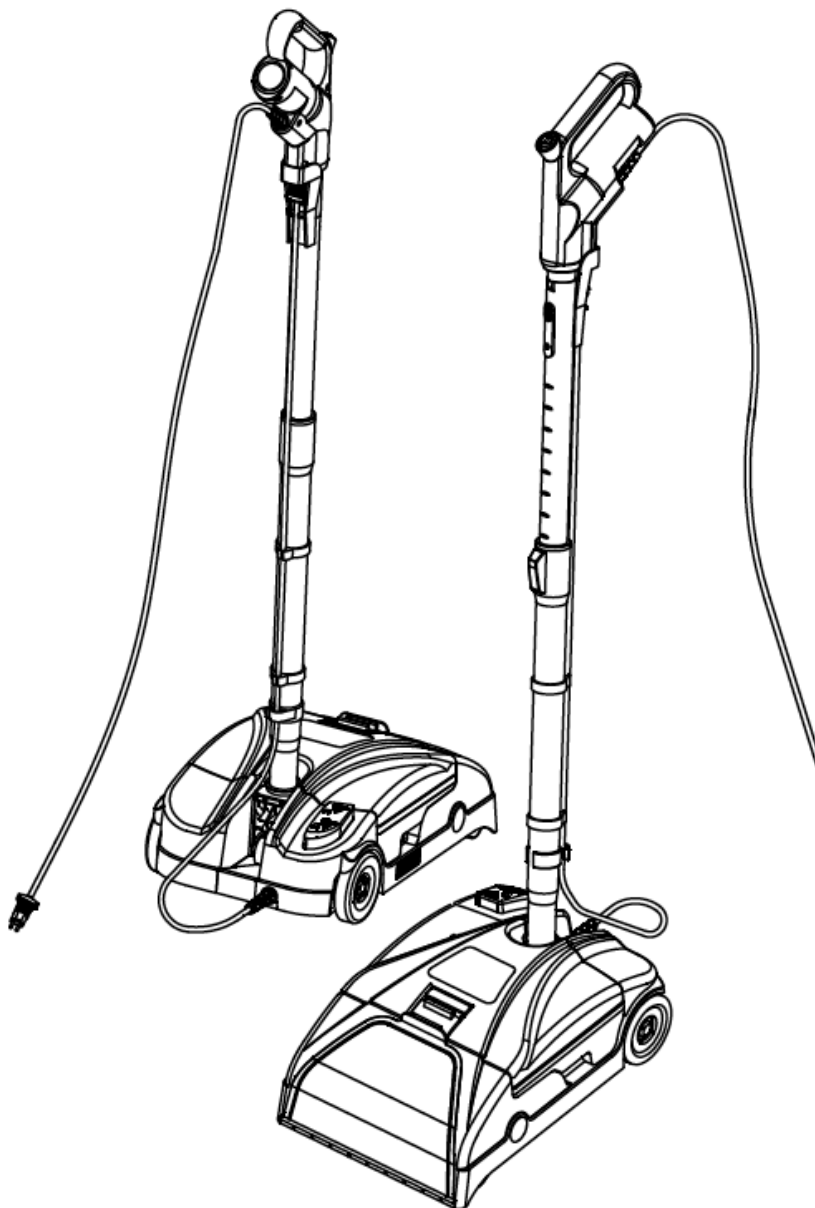


PROLUX STORM CARPET SHAMPOOER/TILE CLEANER MODEL: S1

Operation Instruction

Read all instructions before using this appliance



For your safety please read owners manual in its entirety before use.

Congratulations on your purchase of your new Prolux Storm Carpet Shampooer and Tile Cleaner! The Prolux Storm was made with one purpose in mind; to provide a high-end floor cleaner that fits nearly any Wet/Dry or Water Vacuum. Wet/Dry vacuums are some of the most powerful cleaners on the planet, so now you have the same results as commercial cleaners but at a fraction of the cost. The Prolux Storm features 2 cleaning modes. “Carpet Cleaning” mode and “Hard floor/Tile Cleaning” Mode. With its powerful cleaning motor and automatic adjustable scrubbing brush-roll, it can also automatically clean tile grout or other hard to reach places. With its 2 year Limited warranty, simple to use design for quick spills, and deep cleaning ability it is designed to be one of your most used appliances.



Table of contents

Specifications	3
Safety Precautions.....	4-5
Setup & Operation	
Getting To Know Your Shampooer.....	6
Setup & Operation of Your Shampooer	7-9
Maintenance & Cleaning.....	9-10
Troubleshooting.....	10-11
Warranty	12-13

Specifications

- **Works with nearly any wet/dry vacuum or water vacuum.**
- **Multi surface cleaning – 2 stage cleaning mode, cleans carpet & tile/grout**
- **Auto height-adjusting brush-roll – Automatically adjusts to the correct height for your carpet.**
- **Auto shutoff sensor – Sensor automatically shuts the pump off when the water level in the tank is too low, which prevents the pump from overheating, allowing it to come with a 2 year limited warranty.**
- **2.8L tank – Fewer tank fill-up's = less time cleaning.**

IMPORTANT SAFETY INSTRUCTIONS

When using an electrical appliance, basic precaution should always be followed, including the following:

READ ALL INSTRUCTIONS IN THIS OPERATING MANUAL BEFORE USING THIS APPLIANCE.

Keep the operating manual for reference. Include the operating manual if you pass the appliance to third parties.

Violations of the operating instructions can lead to severe injuries as well as damages to the appliance. Prolux takes no responsibility for damages due to violations of these operating instructions.

The Notices Given

Notices for your safety are especially marked. Always observe these notices to avoid any damages to the appliance.

WARNING: Warning concerning health hazards describing possible risks of injury.

ATTENTION: Warning concerning possible dangers to the appliance or other objects.

NOTE: Highlights tips for you.

WARNING-To reduce the risk of fire, electric shock, or injury:

1. Do not leave the unit when plugged in. Unplug from outlet when not in use, and before servicing.
2. Use only as described in this manual. Use only the recommended attachments, and replacement parts.
3. The Prolux Storm contains an electric motor and power cord. To avoid risk of electrical shock, **DO NOT** immerse the electrical cord in water while filling or cleaning the tank.
4. Use only as described in this manual. Use only the manufactures recommend attachments.
5. Do not use with damaged cord or plug. If the shampooer is not working as it should, has been dropped, damaged, left outdoors, or dropped into water, take it to a service center before use.
6. Do not pull or carry the shampooer by its power cord, do not use the power cord as a handle, do not close the door on power cord, or pull the power cord around sharp edges or corners. Do not run unit over the power cord. Keep the power cord away from heated surfaces.
7. Do not unplug the power cord from your wall by pulling on the cord. To unplug, grasp the end of the plug, not the cord.
8. Do not handle the power cord/plug, or shampooer with wet hands.
9. Do not put any object into the openings of the unit. Do not use the unit with any openings blocked. Keep openings free of dust, lint, hair and anything that may reduce airflow/suction.
- 10.Keep hair, loose clothing, fingers and all parts of body away from openings and moving parts of the unit.
- 11.Turn all controls off before unplugging the unit.
- 12.Use extra care when cleaning on stairs.
- 13.Do not use to pick up flammable or combustible liquids, such as gasoline, or use in areas where they may be present.
14. Do not allow end of plug to whip when winding up the power cord.
- 15.Unplug the unit before connecting the hose.
- 16.Do not pick up anything that is burning or smoking, such as cigarettes, matches, or hot ashes.
- 17.Do not use without water in the tank as this could result in damage to the pump assembly.
- 18.If the supply cord is damaged, the manufacturer or an authorized service center must replace it, in order to avoid a hazard.
- 19.This appliance is not intended for use by persons (including children) with reduced physical, sensory or Mental capabilities, or lack of experience and knowledge, unless they have been given supervision or

instructions concerning the use of the appliance by a person responsible for their safety.

Children should be supervised to ensure they do not play with the appliance.

Do not vacuum, shampoo, or clean:

- Hair and other parts of the body. They could be sucked in and cause injury.
- Pieces of Clothing (e, g, shoe laces, scarves, etc.). They could be sucked in and cause injury.
- Water and other liquids, especially moisture from carpet cleaning agents. Moisture inside the appliance can lead to short-circuiting.
- Toner dust (from laser printers, copying-machines, etc.). There is danger of fire or explosion.
- Hot ash, burning cigarettes or matches. This could cause a fire.
- Pointed objects such as glass shards, nails, etc. Such objects destroy the filters.
- Plaster, cement, and fine drilling-dust, makeup, etc. The filters may clog causing damage to the appliance.

Never use the appliance near flammable or explosive materials -- there is danger of fire or explosion.

Never use the appliance outdoors -- there is danger of rain and dirt destroying the appliance.

Never stick objects into the appliance's openings -- it could cause the appliance to overheat.

Cord Connection

The shampooer runs on electricity, that means there is always danger of electric shock, so please observe the following;

- Never touch the plug with wet hands.
- Always pull directly with the plug. If you want to disconnect the appliance from the outlet. Never pull on the cord, as it might break.
- Take care that the power cord is not bent, pinched, rolled over or gets in contact with heat sources.
- Use only extension cords suited to the power requirements of the appliance.
- Never immerse the appliance in water or other liquids.
- Only operate the appliance if your outlet voltage is the same as that indicated on the appliance's nameplate.
Using the wrong voltage can destroy the appliance.
- If the power cord of this appliance is damaged it must be replaced by the manufacturers, their authorized service representative or a similarly qualified person to avoid danger to the user.

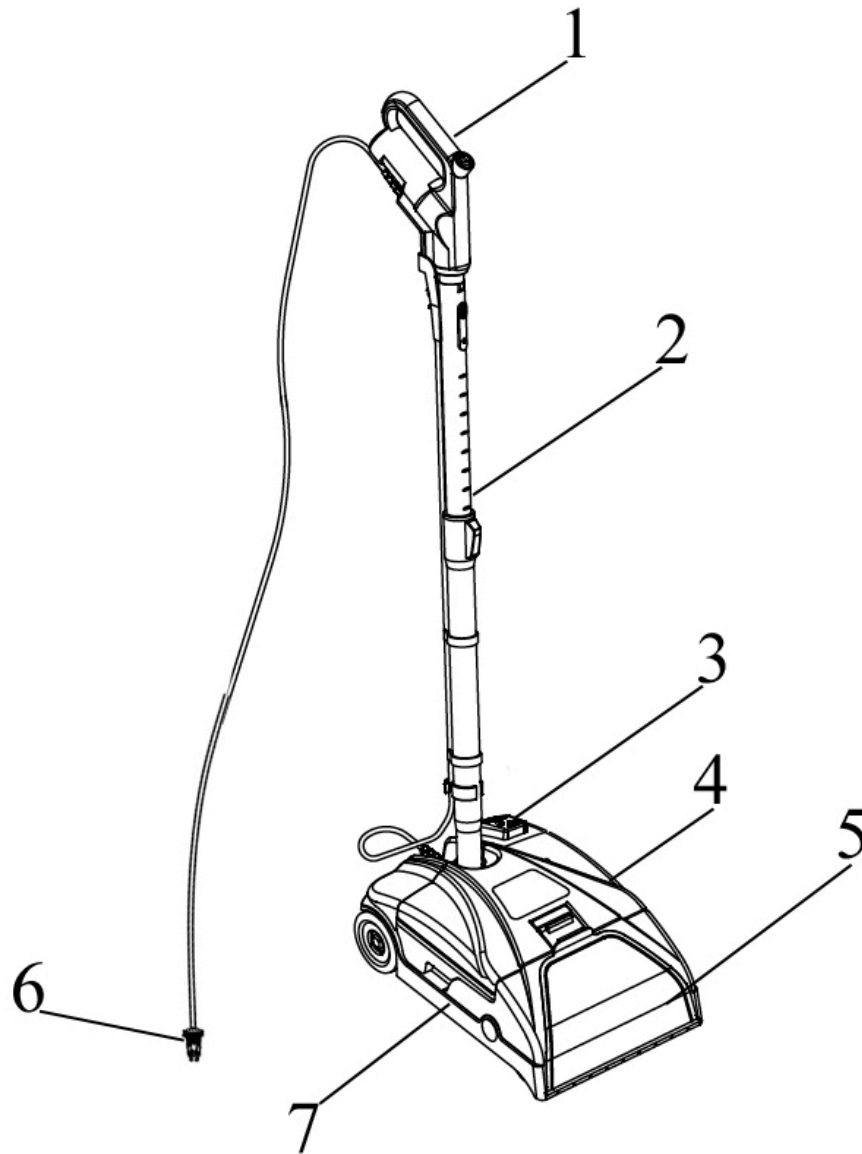
Never use a defective appliance or operate an appliance with a defective power cord. There is a major risk of injury.

Children

Never leave the appliance unattended and use it with special precaution if children or persons who cannot judge dangers are nearby.

People (including children) who are unable to safely operate the appliance on account of their physical, sensory or mental abilities or their lack of experience or knowledge should only use this appliance under supervision or instruction of a responsible person. Packing-materials are not toys. There is danger of suffocation, KEEP OUT OF REACH OF CHILDREN.

GETTING TO KNOW YOUR PROLUX STORM



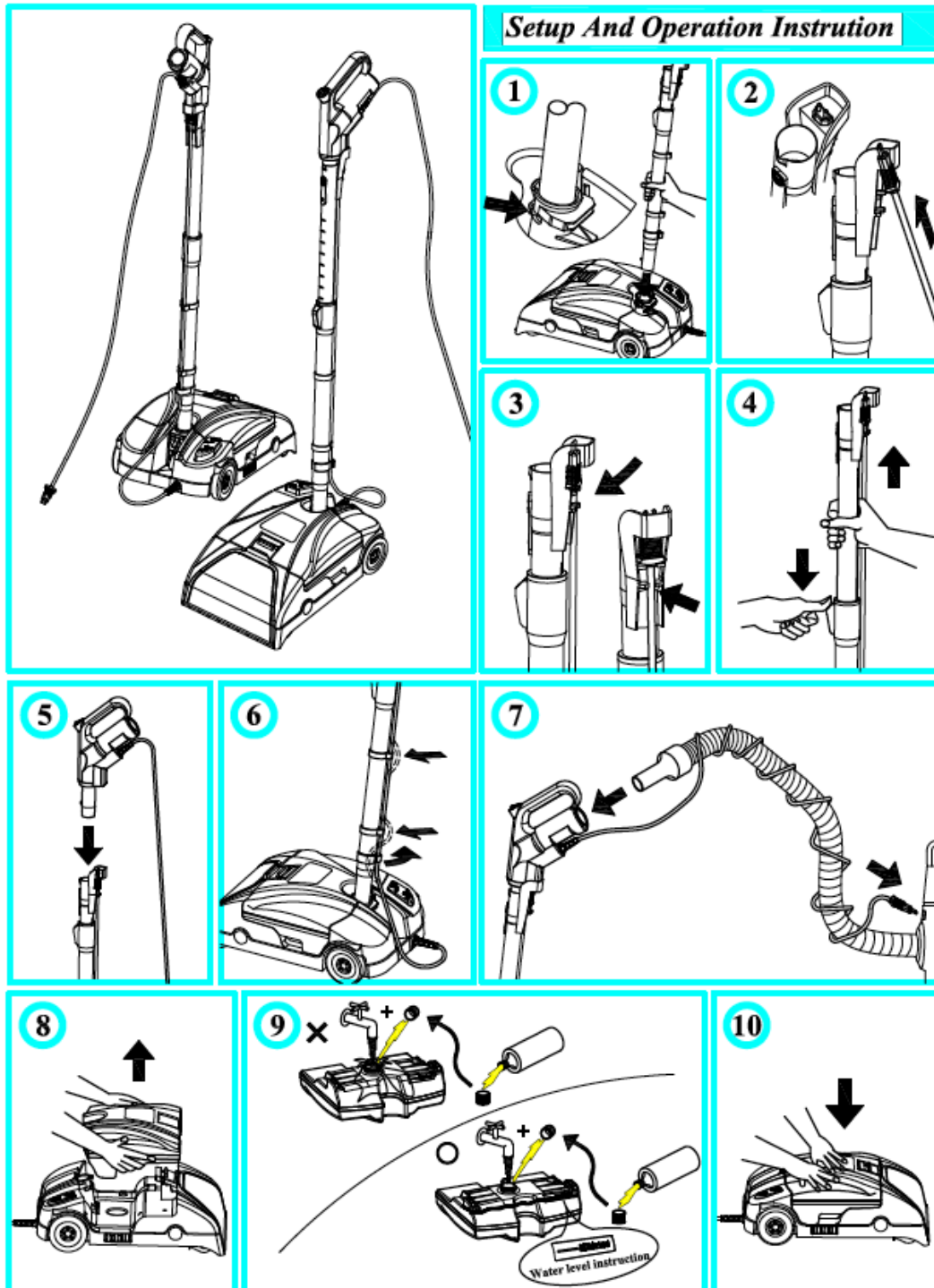
1. Water-safe pump handle with on/off switch
2. Stainless steel adjustable telescopic wand
3. Carpet cleaning/ Tile cleaning mode control button.
4. Water/solution tank
5. Extraction view window
6. 2-Prong electrical cord (plugs into your vacuum cleaner or your water-safe electric hose)
7. Main base unit

SETUP & OPERATION INSTRUCTIONS

WARNING

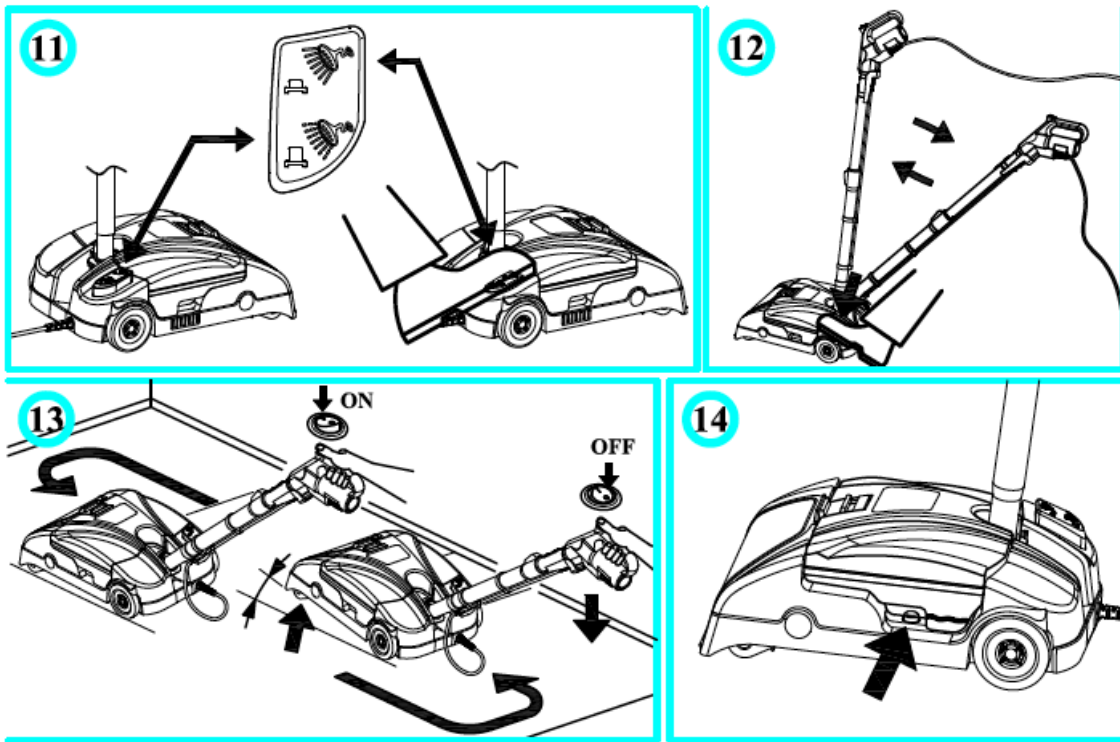
To reduce the risk of electric shock, the power cord must be disconnected before removing the water tank, changing or performing maintenance or troubleshooting shooting checks.

Assembling your Shampooer



NOTE: Always remove the power plug from the wall outlet before assembling/disassembling any parts or accessories.

1. Insert the telescopic wand into the suction inlet pivot assembly. Make sure the button on the end of the wand has been locked into suction the pivot assembly (you will hear an audible “click”)
2. Insert the 2-prong power cord coming from the back of the unit into the cord-retaining clip hole located at the top of the telescopic wand.
3. Press the 2-prong cord into the notches/grooves on the cord-retaining clip, to lock the cord into place.
4. Press the release button on the telescopic wand to allow the wand to extend in and out. Adjust the wand to the appropriate length that is most comfortable for you.
5. Insert the water-safe hose handle into the top of the telescopic wand. Ensure the button on the hose handle locks into the telescopic wand button-hole (you will hear an audible “click”)
6. Insert the loose hanging portion of the power cord into the cord clips located on the telescopic wand, to ensure the power cord stays out of the way while the unit is in use.
7. Install the Wet-pickup hose on your vacuum cleaner (not included with your Prolux Storm) now insert the end of your wet pickup or hose wand into the Prolux Storm hose handle assembly. Then, wrap 2-prong cord around hose until it reaches the canister of your vacuum, where you will then plug the 2-prong cord end into your vacuum cleaner.
8. Remove the solution/water tank from the unit, by simply pulling the tank up off the main unit. Then, remove the solution/water tank caps by unscrewing them counter clockwise.
9. Fill the tank with water, and pour 1 to 2 bottle caps of Prolux brand shampoo into the tank. (For standard carpet cleaning add 1 cap of solution, for extra dirty carpet or carpet trails add 2 caps, and for upholstery cleaning only use 1 cap (always check with upholstery manufacturer guidelines first) **NOTE: DO NOT OVER FILL THE TANK, STOP AS SOON AS YOU REACH THE FULL LINE. (Using any other brand of shampoo besides Prolux brand, could void your warranty)**
10. Tighten the tank caps by twisting them back on in a clockwise direction, ensuring they are snug to avoid leaks. Now, install the filled tank onto the machine, pressing down firmly to ensure the tank is seated properly onto the machine.
11. Now its time to use your Prolux Storm shampooer! Start by turning your vacuum cleaner on. This will provide power to the shampooer, and allow you to extract/suck up the dirt you removed from your floors. Press the spray control pedal to adjust the volume of water/shampoo you spray onto your carpet. One setting is for lightly soiled surfaces (low volume spray), the other is for heavily soiled surfaces (high volume spray).
12. Unlock the pivot assembly by lightly stepping down on the left side of the machine and pulling the handle down.
13. To start cleaning, flip the switch located on the handle to the “ON” position. Now, begin pushing the unit forwards and backwards over the area you wish to clean and make 2 to 3 passes over the soiled area(s) (more passes may be needed for heavily soiled areas). Every forward pass you will flip the handle switch to the “OFF” position to extract/suck up the dirt, and every backwards pass you will flip the handle switch to the “ON” position to saturate/scrub your floor.
14. As illustrated, there is a sensor located underneath the tank. Once the water level drops to a certain point, the sensor will turn the water pump off. If this happens, simply turn the vacuum and shampooer off, refill the tank with water and shampoo as described in points 8-10 and resume cleaning.



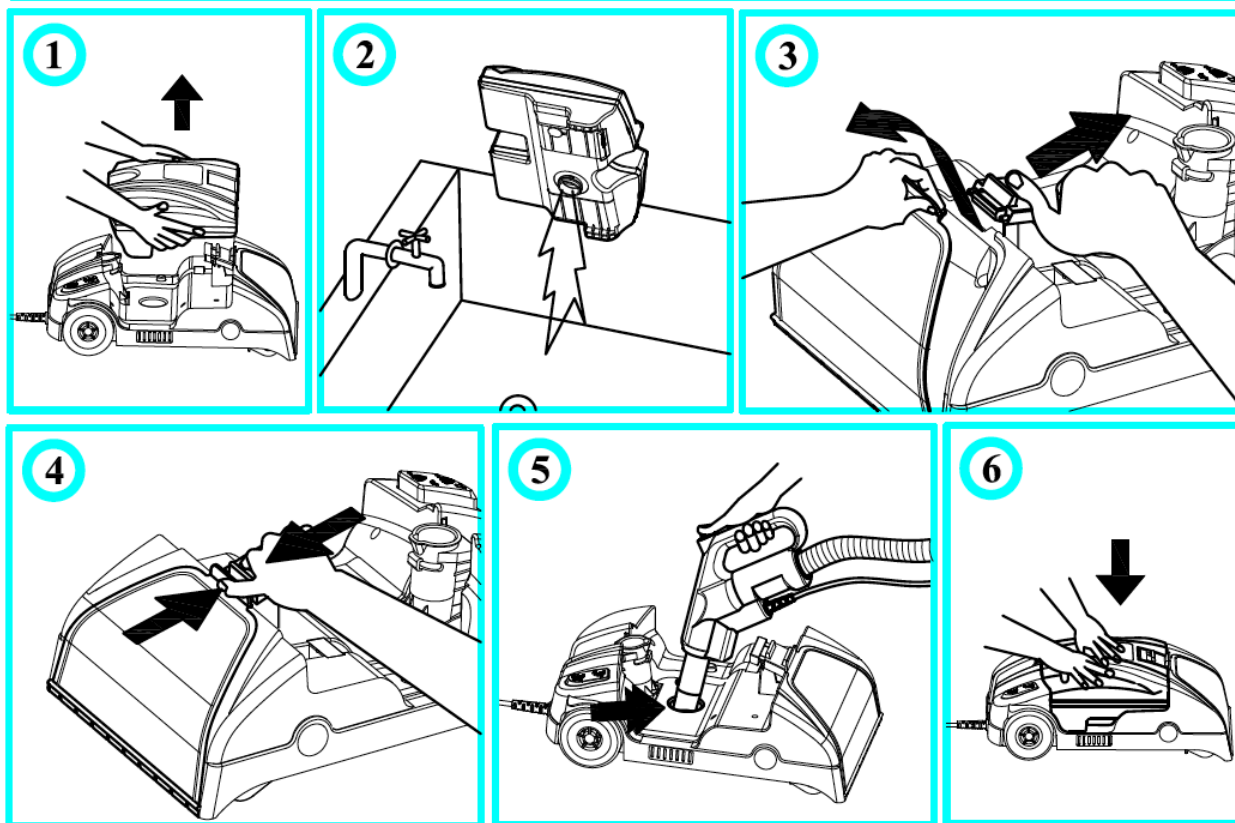
MAINTINANCE & CLEANING

*****WARNING: ALWAYS RINSE YOUR PROLUX CARPET CLEANER TANK WITH CLEAN WATER AFTER EACH USE & RUN A HALF TANK OF CLEAN WATER ONLY (NO SHAMPOO) THROUGH THE MACHINE/SPRAYER AFTER EACH USE FOR 10 SECONDS, THEN EMPTY THE TANK TO AVOID DAMAGE TO THE PUMP, & VOIDING THE WARRANTY*****

TO CLEAN YOUR SHAMPOOER AFTER USE, FOLLOW THE INSTRUCTIONS BELOW.

1. Lift the tank from the unit and unscrew the cap.
2. Pour the remaining solution out of the tank, and then rinse the tank/cap with clean water. *****After this step, fill the tank half way with clean water and run the unit/sprayer for 10 seconds, then empty the tank. This will avoid damage to the pump, and avoid voiding your warranty*****
3. Remove the clear nozzle cover from the front of the unit by releasing the nozzle cover latch, and then rinse the cover with clean water.
4. After rinsing, reinstall the clear cover and lock it back into place by closing the nozzle cover latch.
5. Insert the water-safe pump handle into the solution channel (located under the solution tank) to remove/suck any residual solution that is remaining, to prevent future blockage in the channel.
6. Reinstall the cleaned solution tank with the cap installed.

Cleanup And Storage



Cleaning the Housing

WARNING: Always switch off the appliance and disconnect it from the outlet before cleaning it.

ATTENTION: Do not use Alcohol, cleaning or scouring agents to clean your machine, as these may damage the appliance. Clean the outside of the housing using only a slightly damp washcloth.

Troubleshooting

WARNING: Never use a defective appliance. Always switch off the appliance and disconnect it from the outlet or remove the battery before you start to troubleshoot.

Fault	Possible Cause(s)	Solution
The shampooer will not turn on.	The plug is not connected to the vacuum cleaner or the Vacuum cleaner is not plugged in. OR the shampooer/vacuum is not switched to the “on” position.	Insert the plug into the vacuum, and make sure the vacuum is plugged into an electrical wall outlet and flip the “on/off” switch to the “on” position.
	Electrical wall socket does not carry current.	Test the vacuum cleaner /shampooer on another outlet that you are sure is carrying current.

	The power cord is damaged on the shampooer or your vacuum cleaner.	Replace with a new cord by an authorized service center or professional technician.
Suction power is low/no water is extracting from your floors.	There is a clog in your vacuum.	Check your vacuum for clogs. Refer to your vacuum owners manual.
	The shampooer nozzle, telescopic wand or suction hose is clogged.	Remove the debris that is causing the clog. If necessary, use a long wooden stick (e.g. a broomstick) or coat hanger to do this.
	Dirty filter(s) in your vacuum cleaner.	Refer to your vacuum owners manual.
The vacuum and or shampooer makes unusual noises, or is louder than usual.	The shampooer nozzle, telescopic wand, suction hose, or vacuum cleaner is clogged.	Remove any clogs. If necessary, use a long wooden stick (e.g. a broomstick) or coat hanger to do this. Also refer to your vacuum owners manual.

Troubleshooting for the spinning brush-roll on the shampooer–

Problem – Brush-roll does not spin (motor does not turn on inside the shampooer).

Solution – Please follow all the steps below and try again:

- Unplug the power cord from the vacuum cleaner, count 20 seconds and plug back in.
- Unplug the power cord from the vacuum and then make sure the brush-roll can roll freely and nothing is obstructing it.
- Make sure power cord is firmly “pressed” into power outlet on the front of your vacuum canister.
- On the hose handle, there is an on/off switch. Make sure that it is turned to the “on” position.

Problem – electric motor inside the unit turns on, but brush-roll does not spin.

Solution – Most likely a large object may have been vacuumed up, jammed the brush-roll and broke the belt. Check for obstructions, remove and try again. If the belt is broken, contact your authorized Prolux dealer, for repairs.

Problem – electric power nozzle cuts in and out as you vacuum back and forth.

Solution – There are several connections to get power to the power nozzle, they are: 1) the hose & 2) the canister. Make sure the cord coming from the shampooer is firmly connected the hose handle, and the cord coming from the hose handle is firmly connected to the vacuum canister. If you have traced the ‘cutting out’ problem to one of these areas and they are firmly connected, then when the shampooer and vacuum are unplugged from the wall, you may take a pair of needle-nose pliers and slightly bend the male terminal out so it has a better connection.

TWO YEAR (2) YEAR LIMITED MANUFACTURER WARRANTY

Prolux warranties this product free from defects in material and workmanship for a period of TWO (2) years from the original date of purchase, when utilized for normal use.

Subject to the following conditions, exclusions, and exceptions:

What is Not Covered by the Prolux Warranty - Warranty Exclusions. This limited warranty does not extend to and expressly excludes:

- 1. Normal wear and tear and/or replacement attachments or accessories, including, without limitation, cords, hoses, filters, switches, chargers and other attachments to the shampooer.**
- 2. Damage or burnout of the motor resulting from failure to clear a blockage occurring during the normal course of use.**
- 3. Loss or damage to the body of the unit resulting from conditions beyond the control of Prolux including without limitation, misuse, accidents, abuse, neglect, negligence from the customer, overuse beyond capacity of the unit, or unauthorized modification and/or alteration.**
- 4. Loss or damage to the unit resulting from failure to follow the required maintenance schedule, or failure to use the unit in accordance with written instructions from Prolux, guidelines or the terms of its Owner's Manual.**
- 5. Using the shampooer for commercial use.**
- 6. Failure to properly clean and rinse your shampooer/shampooer tank after each use will void the warranty.**

If your appliance fails to operate properly while in use under normal household conditions within the warranty period, please contact your authorized PROLUX dealer you purchased the unit from. Non-durable parts including, without limitation, filters, accessories, brushes, belts, and electrical parts, which normally require replacement, are specifically excluded from warranty.

This warranty is limited solely to the cost of the repair or replacement of the unit at Prolux's option. This warranty does not cover normal wear of parts and does not apply to any unit that has been tampered (by unauthorized user) with or used for commercial purposes. This limited warranty does not cover damage caused by shipping damage, misuse, abuse, negligent handling, or damage due to faulty packaging or mishandling in transit.

This warranty is extended to the original purchaser of the unit only and is not transferable. This warranty gives you specific legal rights, and you may also have other rights, which vary from state to state. ***IMPORTANT: Before sending your unit back for warranty work, contact your authorized PROLUX retailer you bought the unit from first for instructions on how to send your unit in for warranty work. Unauthorized warranty claims will result in delayed service and may be returned.**

For Authorized Warranty Claims: PROLUX shall be responsible for all parts and labor associated with the warranty claim and the customer shall be responsible for all shipping charges to the PROLUX service center.

In the event of a warranty claim, Prolux will replace any parts associated with the warranty claim, and return the unit back to working order, before sending the item back to the customer.

Prolux is constantly striving to improve our products. Therefore, the specifications contained

herein are subject to change without notice.

Product Warranty Registration

Please follow the link below to register your Prolux product.

www.proluxcleaners.com

For more information on this product, including warranty info and to contact Prolux Customer Service, Please follow the link below:

www.proluxcleaners.com/storm.html

Environmental tips

Once any electronic product is no longer functional, it should be disposed of in such a way as to cause minimum environmental impact, in accordance with the regulations of your local authority. In most cases you can take such products to your local recycling station.

