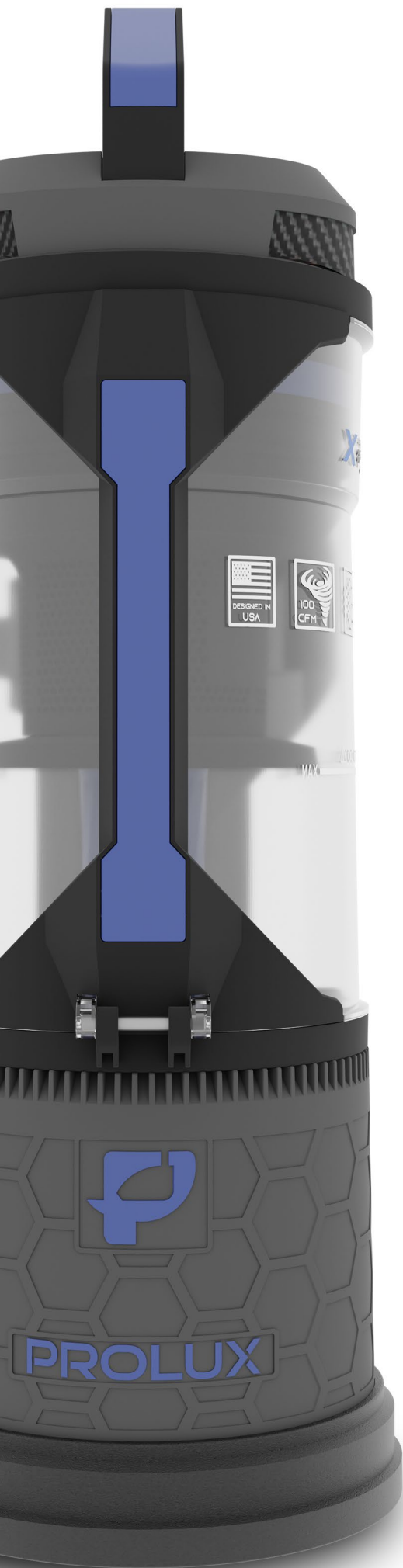


# **X** PROLUX **FORCE**



## INSTRUCTION MANUAL

For your safety, please read the owner's manual in its entirety.



*Congratulations on purchasing the Prolux Xforce bagless backpack vacuum!*

The Xforce was built from the ground up to revolutionize your vacuuming experience. Backpack vacuums are known to save time, and we took it one step further by helping you save money too! No more constantly buying bags. No more guessing when it's time to empty the vacuum.

The Xforce uses tried-and-true bagless technology to give you all-day cleaning power!

# Contents

Warranty Registration .....	4
Important Safety Instructions.....	5
Specifications .....	7
Machine Components .....	8
Attachment Guide .....	9
Unboxing and Assembly .....	10
How to Wear Your Vacuum.....	11
Operation Instructions.....	13
Care and Maintenance.....	16
Routine Maintenance .....	16
Replacing the Pre-Motor Filter .....	17
Replacing the Post-Motor Filter.....	19
Clearing a Clog .....	20
Troubleshooting .....	21
Replacement Parts.....	22
Warranty.....	23

## Warranty Registration

At Prolux, we take pride in the quality of our products, so most of our time and money is spent on R&D rather than on advertising. Because of this, we feel very confident in the quality of our products and feel very comfortable offering a **5-year** motor warranty and a 3-year body warranty. We only require that you register your machine within 90 days of purchase. If a machine is not registered, we will only offer a 1-year warranty, which will cover both the motor and body. When you register your machine not only will you receive the **5-year/3-year warranty** you will also receive:

- **FREE** shipping on any warranty claims.
- **FREE** shipping on any order returned within the 61-day return period.
- Mailing list notifications - The #1 thing that kills vacuums is not keeping up on maintenance, so when you register your product, we will provide reminders when it's time to replace your filters, etc.
- Coupons and offers for discounts on supplies.

Registering is simple. Just go to the warranty section of our website below and fill out the form. Once registration is complete, you'll then be covered.

<https://proluxcleaners.com/pages/warranty>



With over 20 years in business, superior products, an honest, hardworking team, unparalleled leadership, and many years spent on Utah's fastest growing business list, you can rest assured that Prolux will be here to back up our warranty claims. We strive to provide responsive and pleasant customer service experiences and develop exceptional products you can count on! – PROLUX

# **Important Safety Instructions**

## **READ ALL INSTRUCTIONS IN THIS OPERATING MANUAL BEFORE USING THIS APPLIANCE.**

When using an electrical appliance, basic precautions should always be followed, including the following:

Keep the operating manual for reference. Include the operating manual if you pass the appliance to third parties.

**Violations of the operating instructions can lead to severe injuries as well as damage to the appliance.** Prolux takes no responsibility for damages due to violations of these operating instructions.

### **Notices Given:**

Notices for your safety are specially marked. Always observe these notices to avoid any damage to the appliance.

**WARNING:** Warning concerning health hazards describing possible risks of injury.

**ATTENTION:** Warning concerning possible dangers to the appliance or other objects.

**NOTE:** Highlights tips for you.

**WARNING -** To reduce the risk of fire, electric shock, or injury:

1. Do not leave the vacuum cleaner plugged in. Unplug from outlet when not in use, or before servicing.
2. Use only as described in this manual. Use only the recommended attachments and replacement parts.
3. To reduce the risk of electric shock, do not use outdoors, on wet surfaces, and do not use for wet pickup/cleanup.
4. Do not use with damaged cord or plug. If the vacuum cleaner is not working as it should, has been dropped, damaged, left outdoors, or dropped into water, take it to a service center before use.
5. Do not pull or carry the vacuum by its power cord, do not use the power cord as a handle, do not close the door on power cord, or pull the power cord around sharp edges or corners. Do not run vacuum cleaner over the power cord. Keep the power cord away from heated surfaces.
6. Do not unplug the power cord from your wall by pulling on the cord. To unplug, grasp the end of the plug, not the cord.
7. Do not handle the power cord/plug or vacuum cleaner with wet hands.
8. Do not put any object into the openings of the vacuum. Do not use the vacuum with any openings blocked. Keep openings free of dust, lint, hair and anything that may reduce airflow.
9. Keep hair, loose clothing, fingers, and all body parts away from openings and moving parts of the vacuum.
10. Turn all controls off before unplugging the vacuum.
11. Use extra care when cleaning on stairs.
12. Do not use to pick up flammable or combustible liquids, such as gasoline, or use in areas where they may be present.
13. Unplug the vacuum before connecting the hose.
14. Do not pick up anything that is burning or smoking, such as cigarettes, matches, or hot ashes.
15. Do not use without dust bin and/or filter in place.
16. If the power cord is damaged, the manufacturer or an authorized service center must replace it.
17. This appliance is not intended for use by persons (including children) with reduced physical, sensory or mental capabilities, or lack of experience and knowledge, unless they have been given supervision or instructions concerning the use of the appliance by a person responsible for their safety.
18. Do not place the vacuum on the ground while running. The vacuum must be worn to ensure proper airflow through the machine.

## **Do not vacuum or clean:**

- Hair and other parts of the body. They could be sucked in and cause injury.
- Pieces of Clothing (e, g, shoelaces, scarves, etc.). They could be sucked in and cause injury.
- Water and other liquids, especially moisture from carpet cleaning agents. Moisture inside the appliance can lead to short-circuiting.
- Toner dust (from laser printers, copying machines, etc.). There is danger of fire or explosion.
- Hot ash, burning cigarettes or matches. This could cause a fire.
- Pointed objects such as glass shards, nails, etc. Such objects destroy the filters.
- Plaster, cement, and fine drilling-dust, makeup, etc. The filters may clog causing damage to the appliance.

Never use the appliance near flammable or explosive materials -- there is danger of fire or explosion.

Never use the appliance outdoors -- there is danger of rain and dirt destroying the appliance.

Never stick objects into the appliance's openings -- it could cause the appliance to overheat.

## **Cord Connection**

The vacuum runs on electricity, so there is always a risk of electric shock. Please observe the following:

- Never touch the plug with wet hands.
- Always pull the plug directly to disconnect the appliance from the outlet. Never pull on the cord, as it might break.
- Make sure the power cord is not bent, pinched, rolled over, or comes into contact with heat sources.
- Only use extension cords suited to the power requirements of the appliance.
- Never immerse the appliance in water or other liquids.
- Only operate the appliance if your outlet voltage is the same as indicated on the appliance's nameplate. Using the wrong voltage can destroy the appliance.
- If the power cord of this appliance is damaged it must be replaced by the manufacturers, their authorized service representative, or a similarly qualified person to avoid danger to the user.

Never use a defective appliance or operate an appliance with a defective power cord. There is major risk of injury.

## **Children**

Never leave the appliance unattended, especially when children or persons who may not understand the hazards of the machine are nearby.

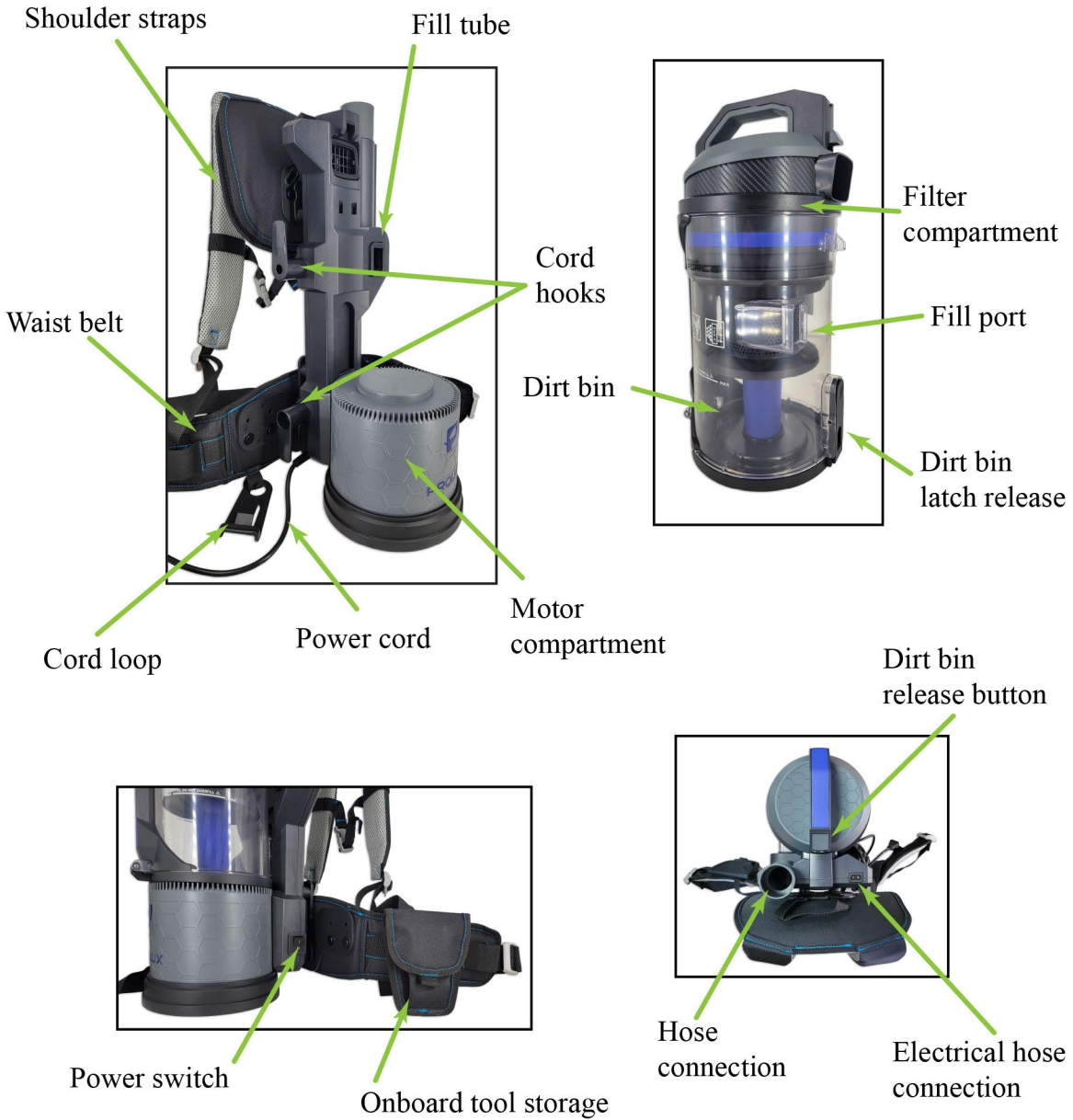
Persons (including children) who are unable to safely operate the appliance on account of physical, sensory, or mental abilities, or lack of experience or knowledge should only use this appliance under supervision or instruction of a responsible person. Packing materials are not toys. There is a danger of suffocation, KEEP OUT OF REACH OF CHILDREN.

**SAVE THESE INSTRUCTIONS**

## Specifications

Model	Xforce
Version	Residential
Voltage	120V AC
Max Power	1200 Watts
Max Amps	10 A
Max CFM	100
Max Water Lift	80"
Air Watts	941
Filtration	HEPA
Tank Capacity	2.4 Quarts (2.3L)
Cord Length	30 Feet
Noise	72 dbA $\pm$ 5%
Weight	10.8 lb.

# Machine Components



## Attachment Guide



**1. Hose**

**2. Carpet Floor Tool**

**3. Hard Floor Tool**

**4. Crevice Tool**

**5. Duster Brush**

**6. Upholstery Tool**

**7. Extendable Wand**

## Unboxing and Assembly

1. Preparing your vacuum for use is incredibly simple. First, make sure that the dust canister is firmly attached to the main body.



2. Next, attach the hose onto the port at the top of the unit.



3. You can now either attach your desired tool directly to the hose or attach the extension wand. **Pro-Tip: this vacuum uses “friction fit” attachments. To ensure they stay in place, push and twist the attachments all in one motion as you are connecting them.**



## How to Wear Your Vacuum

*\*\*Note: Do not run the vacuum if it's placed on the ground. The vacuum must be worn to allow sufficient airflow through the machine\*\**

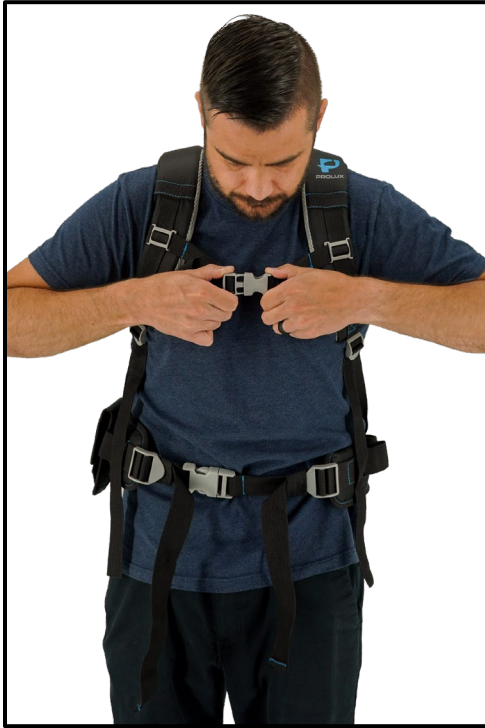
1. First, put the vacuum on the same way that you would put on a backpack. Adjust the shoulder straps until the hip pads are roughly lined up to the top of your hip bones.



2. Next, buckle the hip strap, making sure that the pads rest on top of your hip bones. This will keep the weight of the vacuum on your hips, increasing your comfort while cleaning. Tighten the hip buckle.

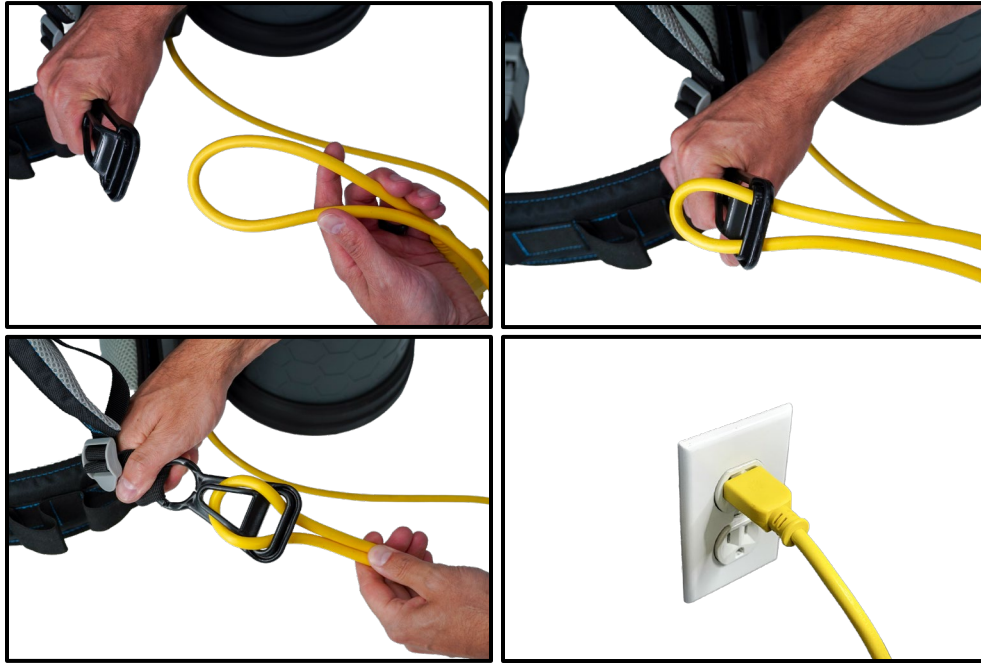


3. Finally, buckle the chest strap and tighten it. This will pull the top of the vacuum closer to your body, stabilizing it while you clean. Once the chest strap is buckled, adjust all the straps until you find the most comfortable fit for you.



## Operation Instructions

1. Once your vacuum is on securely, secure the power cord to the hanger, and plug the power cord into an electric wall outlet. (Yellow cord shown below for visual reference)



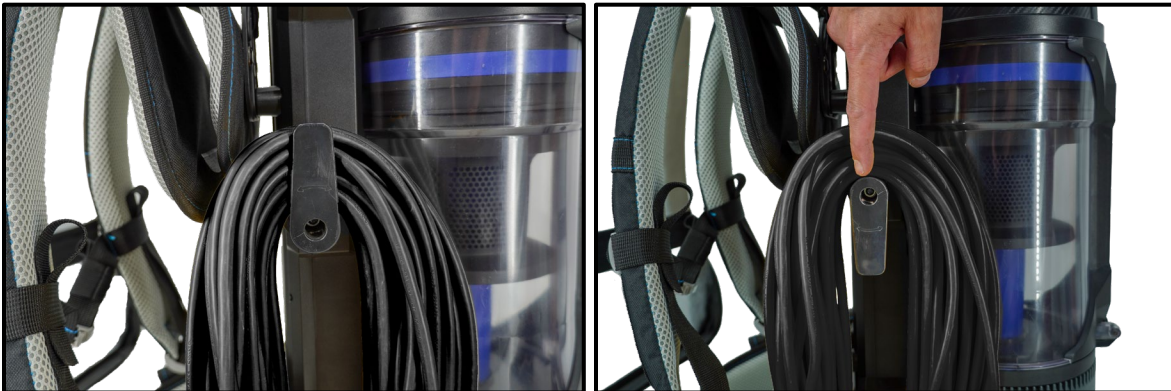
2. The power switch is located on your right side, towards the bottom half of the main vacuum body. Reach back and turn the unit on when you are ready to begin cleaning.



3. Your harness is equipped with holsters to bring the smaller attachments along with you while you clean. It's recommended to always turn the vacuum off before switching attachments.



4. To prevent injury or damage to things around you, use both hands when cleaning above your head to better stabilize the wand and/or hose.
5. When you have finished cleaning, power off the unit. Unplug the extension cord from the wall, then store the extension cord using the quick-release cord wrap system. When the top cord hook is pointed up, you can coil the cord around the hooks. To quickly remove the cord, point the top hook down.



6. Once you have taken the vacuum off your back, remove the dust canister by pressing the canister release button. Empty the dust canister by pressing the hatch release button near the bottom of the canister. Always empty the canister if it is filled up to the Max Fill line.



## **WARNING**

### **DO NOT OVERFILL DIRT BIN**

To prolong the life of the machine, empty the dirt bin after each use, or when debris is near the max fill line. Never overfill the dirt bin.

## Care and Maintenance

*Always unplug the vacuum from power before performing any of these tasks!*

### Routine Maintenance

1. Wipe down the vacuum and attachments with a damp cloth. This will allow you to check for damage and built-up debris that could impact the vacuum's performance. Do not use a damaged vacuum or attachment – have it repaired by an authorized service provider.
2. Inspect the full length of the extension cord for any wear or damage. To prevent injury, never use a damaged cord. Contact your authorized service provider for a replacement.
3. Remove the dust canister, empty it, and wipe out the interior and exterior with a damp cloth.



4. **Inspect both the pre-motor and post-motor filters after each use.** Clean and/or replace the filters following the instructions for filter replacements found in the next sections.

## **Replacing the Pre-Motor Filter**

1. First, remove the dust canister from the main body.
2. Use the handle to twist the lid with a short, counterclockwise motion. Remove the lid and set it aside.



3. Use the tab to pull the filter out of the chamber. Wipe the chamber down with a damp cloth if necessary, then inspect the filter.

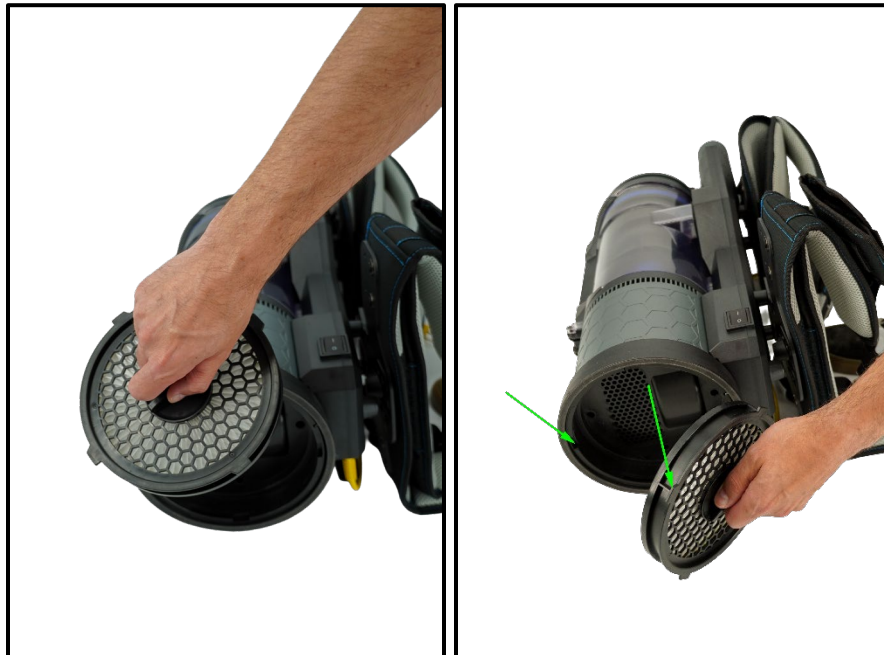


4. The filter can be cleaned several times before needing replacement. To clean, take the filter outdoors and use a can of compressed air on both sides of the filter to blow out as much dust as possible. **Replace filters as needed or every 6 months, whichever comes first.**
5. Reinstall the cleaned or new filter into the filter chamber, then replace the lid. Secure the lid with a short clockwise twist.

## Replacing the Post-Motor Filter

**Warning:** The post-motor filter gets hot during vacuum use. Allow sufficient time for the filter to cool before removing.

1. The post-motor filter is located on the bottom of the main body. Rest the vacuum with the straps facing down on an appropriate workspace.
2. Using the pull-tab on the filter, twist the filter counterclockwise until the retention tabs are lined up with the slots indicated by the green arrow. The filter is now able to be removed.



3. The filter can be cleaned several times before needing replacement. To clean, take the filter outdoors and use a can of compressed air on both sides of the filter to blow out as much dust as possible. **Replace filters as needed or every 6 months, whichever comes first.**
4. Reinstall the cleaned or new filter into the filter chamber, securing it with a short clockwise twist.

## Clearing a Clog

If your vacuum begins making strange noises, or you're experiencing a noticeable decrease in suction power, you may have a clog somewhere in the system. Follow these steps to get your vacuum back to peak performance.

1. First, check that the dust canister is not overfilled. If collected dirt or debris is past the max fill line, it will impact the vacuum's performance. Empty the dust canister if necessary.
2. Check that both filters are not dirty. Clean and/or replace the filters following the instructions in the previous sections.
3. Check the fill tube on the main body of the vacuum. You can use a long, thin object like a clothes hanger or pencil to clear out this short channel.



4. Finally, check the hose, wand, and any attachments for clogs. The attachments can be cleared with a pencil, toothbrush, or similar item. For the hose, a broom handle can be used to dislodge any clogs, allowing you to shake them out of the hose's interior. Do not flush the hose with water to clear a clog! The vacuum is not designed for wet pickup. Any moisture in the suction system could cause injury to you, or damage to the machine.

## Troubleshooting

**WARNING:** Never use a defective appliance. Always switch off the appliance and disconnect it from the outlet before you start to troubleshoot.

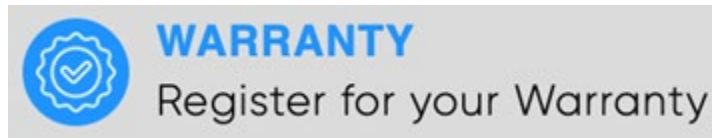
Fault	Possible Cause	Solution
The vacuum will not turn on.	The plug is not connected to the electric wall outlet, or the appliance is not switched to the “on” position.	Insert the plug into an electric wall outlet and flip the “on/off” switch to the “on” position.
	Electric wall outlet does not carry power.	Test the vacuum cleaner on another outlet you are sure is carrying current.
	The power cord is damaged.	Replace with a new cord by an authorized service provider.
Suction power is low.	The bag or filter is full or clogged.	Change or clean the bag and/or filter.
	The power nozzle, attachment wand or suction hose is clogged.	Remove any debris that is causing the clog. If necessary, use a long stick or coat hanger to remove the clog.
	The bag or filter is installed incorrectly.	Remove the bag and filter and reinstall, making sure these are correctly put into place when reinstalling.
	The tool attachment being used does not work properly on the surface you are cleaning.	Attach the appropriate tool for the surface you are vacuuming.
	The filter is dirty.	Change or clean the filter.
The vacuum makes unusual noises or is louder than normal.	The power nozzle, attachment wand, suction hose, or filters are clogged.	Remove any clogs. If necessary, use a long stick or coat hanger to remove the clog.
The vacuum has shut off during use.	The vacuum has been clogged and has overheated.	Unplug the vacuum, empty the dirt bin, and check and clear any clogs. The vacuum may need up to 3 hours to cool off before it turns back on.

## Replacement Parts

Over the course of your vacuum's life, certain parts will experience wear and tear and need replacing. To order replacement parts, you can contact us at [service@proluxcleaners.com](mailto:service@proluxcleaners.com), visit our website at <https://proluxcleaners.com>, or scan the QR code below:



## Warranty



### Why do I have to register my product within 90 days to get my warranty?

**Great question! Do you know what normally kills a vacuum cleaner?**

1. Vacuum dirt bin being overfilled which causes the motor to overheat.
2. Improper cleaning and not replacing filters, which overheats the motor.
3. Improper maintenance, such as not regularly clearing hair and carpet fibers that get caught in the dirt bin, which overheats the motor.

LOL, do you see a trend? In other words, proper maintenance will add years to your vacuum's life. When you register your warranty, we will email you maintenance tips, remind you when it is time to maintain your vacuum, provide product info updates, and. We do not ever require you to purchase anything OR to prove that you are maintaining your vacuum to be covered by the warranty. All we care about is that you are getting our reminders. Normally we send out maintenance email reminders once every 6 months.

**To register for your warranty, go to**

**<https://proluxcleaners.com/pages/warranty>**

**or scan below with your phone**



## **LIMITED WARRANTY**

When registered, Prolux warranties this product's motor free from defects in material and workmanship for the five (5) years of the motor, and three (3) years on the body of the cleaner, free from manufacturer defects in material and workmanship from the original date of purchase, when utilized for normal use.

### **What is Not Covered by the Prolux Warranty - Warranty Exclusions:**

This limited warranty does not extend to and expressly excludes:

1. Normal wear and tear and/or replacement attachments or accessories, including, without limitation, hose, wand, or other attachments to the cleaner.
2. Damage or burnout of the cleaner's body or motor resulting from failure to clear a blockage occurring during the normal course of use.
3. Loss or damage to the cleaner body resulting from conditions beyond the control of Prolux including without limitation, misuse, accidents, abuse, neglect, negligence from the customer, overuse beyond the capacity of the cleaner, or unauthorized modification and/or alteration.
4. Loss or damage to the cleaner resulting from failure to follow the required maintenance schedule or failure to use the cleaner per written instructions from Prolux, guidelines, or the terms of its owner's manual.

If your appliance fails to operate properly while in use under normal household conditions within the warranty period, please contact the authorized Prolux dealer you purchased the unit from. Non-durable parts including, without limitation, pads, cords, and switches, which normally require replacement, are specifically excluded from the warranty. This warranty is limited solely to the cost of the repair or replacement of the unit at the option of Prolux. This warranty does not cover normal wear of parts and does not apply to any unit that has been tampered with (by an unauthorized user) or used for commercial purposes unless the unit is a commercial model. This limited warranty does not cover damage caused by shipping damage, misuse, abuse, negligent handling, or damage due to faulty packaging or mishandling in transit. This warranty is extended to the original purchaser of the unit only and is not transferable.

**\*IMPORTANT:** Before sending the unit back for warranty work, contact the authorized Prolux retailer you bought the unit from first. Unauthorized warranty claims may be sent back.

**Authorized Warranty claims: Prolux shall be responsible for all parts, labor, and shipping if the item is registered. If the item is NOT registered Prolux shall be responsible for the parts and labor of the repair and the customer shall be responsible for ALL shipping charges to AND from the Prolux service center. Prolux is constantly striving to improve our products. Therefore, the specifications contained herein are subject to change without notice.**